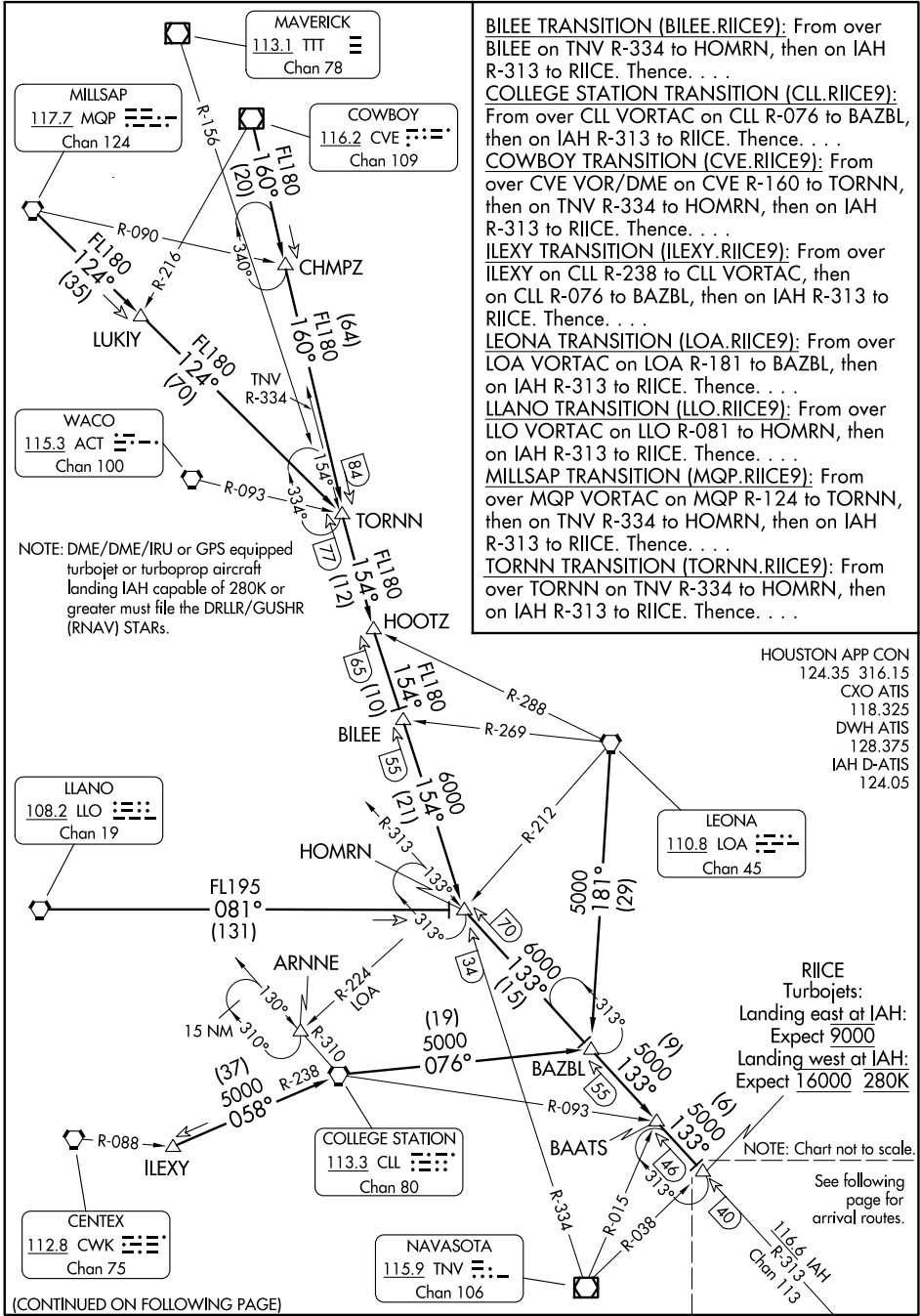


RIICE NINE ARRIVAL

Transition Routes

HOUSTON, TEXAS



BILEE TRANSITION (BILEE.RIICE9): From over BILEE on TNV R-334 to HOMRN, then on IAH R-313 to RIICE. Thence. . .

COLLEGE STATION (CLL.RIICE9): From over CLL VORTAC on CLL R-076 to BAZBL, then on IAH R-313 to RIICE. Thence. . .

COWBOY TRANSITION (CVE.RIICE9): From over CVE VOR/DME on CVE R-160 to TORNN, then on TNV R-334 to HOMRN, then on IAH R-313 to RIICE. Thence. . .

ILEXY TRANSITION (ILEXY.RIICE9): From over ILEXY on CLL R-238 to CLL VORTAC, then on CLL R-076 to BAZBL, then on IAH R-313 to RIICE. Thence. . .

LEONA TRANSITION (LOA.RIICE9): From over LOA VORTAC on LOA R-181 to BAZBL, then on IAH R-313 to RIICE. Thence. . .

LLANO TRANSITION (LLO.RIICE9): From over LLO VORTAC on LLO R-081 to HOMRN, then on IAH R-313 to RIICE. Thence. . .

MILLSAP TRANSITION (MQP.RIICE9): From over MQP VORTAC on MQP R-124 to TORNN, then on TNV R-334 to HOMRN, then on IAH R-313 to RIICE. Thence. . .

TORNN TRANSITION (TORNN.RIICE9): From over TORNN on TNV R-334 to HOMRN, then on IAH R-313 to RIICE. Thence. . .

NOTE: DME/DME/IRU or GPS equipped turbojet or turboprop aircraft landing IAH capable of 280K or greater must file the DRLLR/GUSHR (RNAV) STARs.

HOUSTON APP CON
124.35 316.15
CXO ATIS
118.325
DWH ATIS
128.375
IAH D-ATIS
124.05

SC-5, 16 MAY 2024 to 13 JUN 2024

SC-5, 16 MAY 2024 to 13 JUN 2024

(CONTINUED ON FOLLOWING PAGE)

RIICE NINE ARRIVAL

Transition Routes

HOUSTON, TEXAS