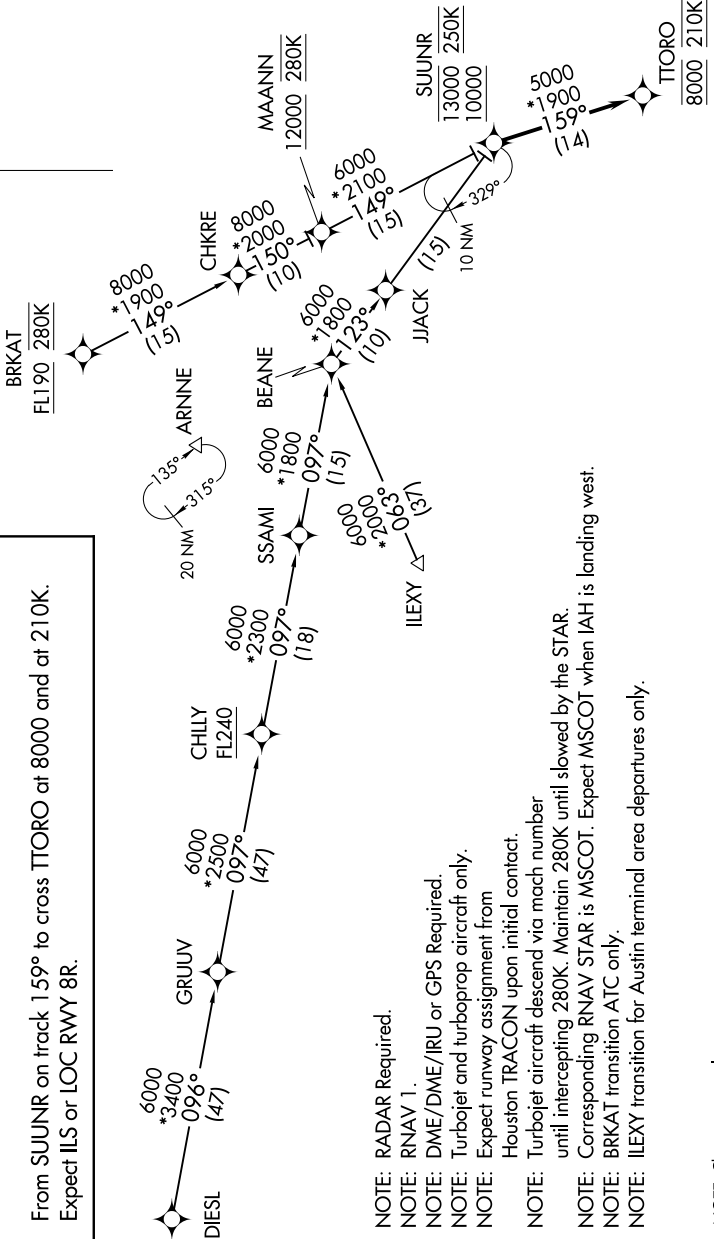
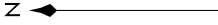


HOUSTON APP CON
124.35 316.15
D-ATIS
124.05



ARRIVAL ROUTE DESCRIPTION

- BRKAT TRANSITION (BRKAT.TTORO3):
- CHILLY TRANSITION (CHILLY.TTORO3):
- DIESEL TRANSITION (DIESEL.TTORO3):
- IILEXY TRANSITION (IILEXY.TTORO3):

From SUUNR on track 159° to cross TTORO at 8000 and at 210K.
Expect ILS or LOC RWY 8R.

NOTE: RADAR Required.

NOTE: RNAV 1.

NOTE: DME/DME/IRU or GPS Required.

NOTE: Turbojet and turboprop aircraft only.

NOTE: Expect runway assignment from Houston TRACON upon initial contact.

NOTE: Turbojet aircraft descend via mach number until intercepting 280K. Maintain 280K until slowed by the STAR.

NOTE: Corresponding RNAV STAR is MSCOT. Expect MSCOT when IAH is landing west.

NOTE: BRKAT transition ATC only.

NOTE: IILEXY transition for Austin terminal area departures only.

NOTE: Chart not to scale.