

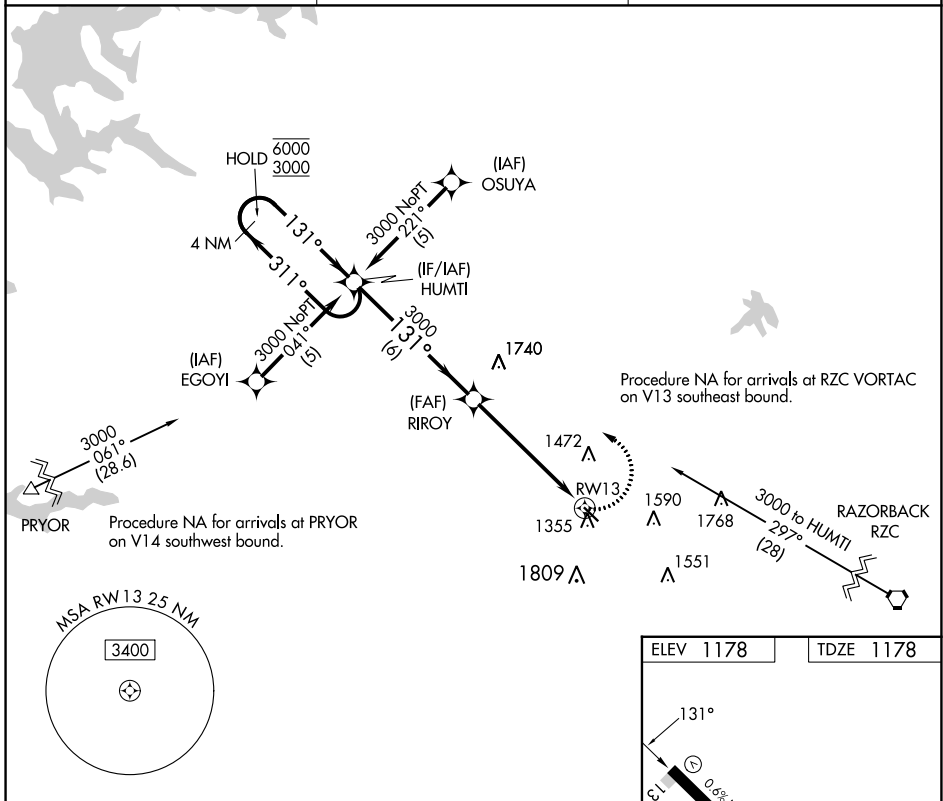
| | |
|------------------------|-------------------------|
| APP CRS 131° | Rwy Idg 3863 |
| | TDZE 1178 |
| | Apt Elev 1178 |

RNAV (GPS) RWY 13

CRYSTAL LAKE (5M5)

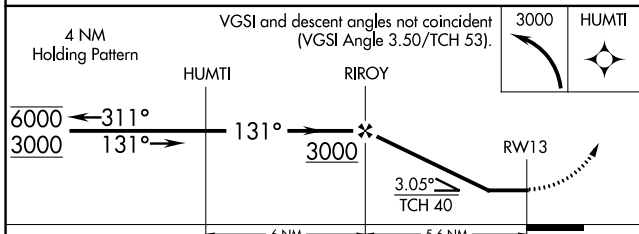
| | | |
|-----------------|---|---|
| RNP APCH - GPS. | <p>Procedure NA at night. Rwy 13 helicopter visibility reduction below 1 SM NA. Use Northwest Arkansas Nil altimeter setting; if not received, use Joplin Rgnl altimeter setting and increase all MDAs 120 feet and LNAV Cat C and Circling Cat B visibility ¼ SM and Circling Cat C visibility ½ SM. Circling NA for Cat C southwest of Rwy 13-31.</p> | <p>MISSED APPROACH: Climbing left turn to 3000 direct HUMTI and hold.</p> |
|-----------------|---|---|

| | | |
|---|--------------------------|-------------------------------|
| RAZORBACK APP CON * 121.0 244.575 | CLNC DEL 126.6 | UNICOM 122.8 (CTAF) |
|---|--------------------------|-------------------------------|

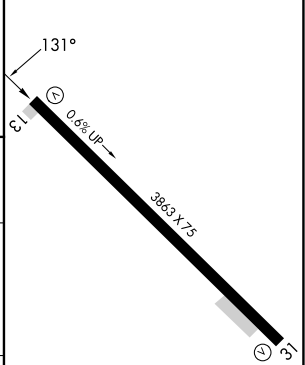


SC-1, 16 MAY 2024 to 13 JUN 2024

SC-1, 16 MAY 2024 to 13 JUN 2024



| | |
|-----------|-----------|
| ELEV 1178 | TDZE 1178 |
|-----------|-----------|



| CATEGORY | A | B | C | D |
|----------|-----------------------|-----------------------|-------------------------------|----|
| LNAV MDA | 1720-1 | 542 (600-1) | 1720-1 5/8 542 (600-1 5/8) | NA |
| CIRCLING | 1820-1 642 (700-1) | 1900-1 722 (800-1) | 1940-2 1/4 762 (800-2 1/4) | NA |

LURL Rwy 13-31