

APP CRS 230°	Rwy Idg 5010
	TDZE 184
	Apt Elev 184

RNAV (GPS) RWY 23

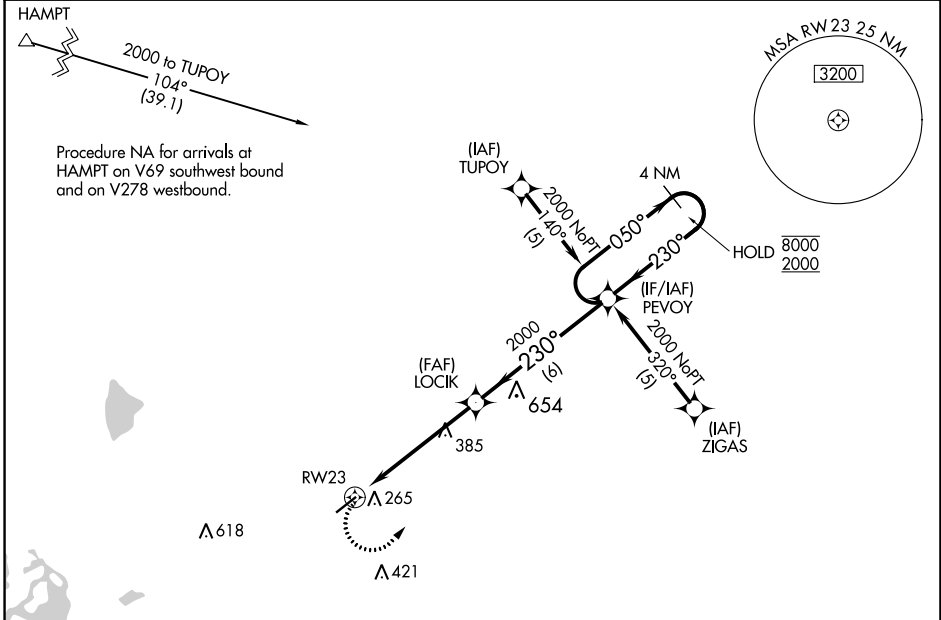
Z M JACK STELL FLD (C'RT)

RNP APCH - GPS.

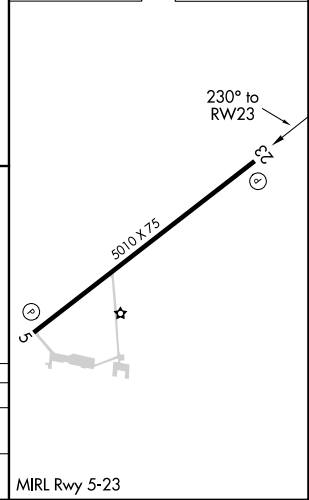
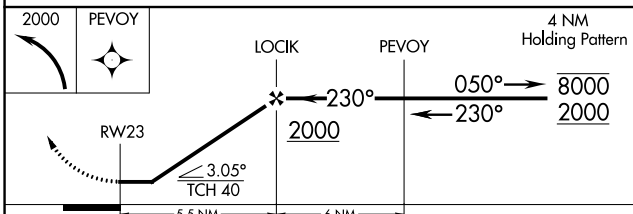
⚠ Rwy 23 helicopter visibility reduction below 1 SM NA. Straight-in and Circling Rwy 23 NA at night. Use Monroe LA. altimeter setting; when not received, use El Dorado altimeter setting and increase all MDA 20 feet, increase LNAV Cat C visibility 1/8 SM and Circling Cat C visibility 1/4 SM.

MISSED APPROACH:
Climbing left turn to 2000 direct PEVOY and hold.

MLU ASOS 125.05	MEMPHIS CENTER 135.875 269.35	UNICOM 122.8 (CTAF)
---------------------------	---	-------------------------------



ELEV 184	TDZE 184
----------	----------



CATEGORY	A	B	C	D
LNAV MDA	760-1	576 (600-1)	760-1 ⁵ / ₈ 576 (600-1 ⁵ / ₈)	NA
C CIRCLING	760-1	576 (600-1)	840-1 ³ / ₄ 656 (700-1 ³ / ₄)	NA

SC-1, 16 MAY 2024 to 13 JUN 2024

SC-1, 16 MAY 2024 to 13 JUN 2024