

VOR/DME JBR 115.85 Chan 105(Y)	APP CRS 019°	Rwy Idg TDZE Apt Elev 4011 290 290
--	------------------------	--

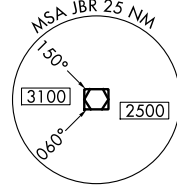
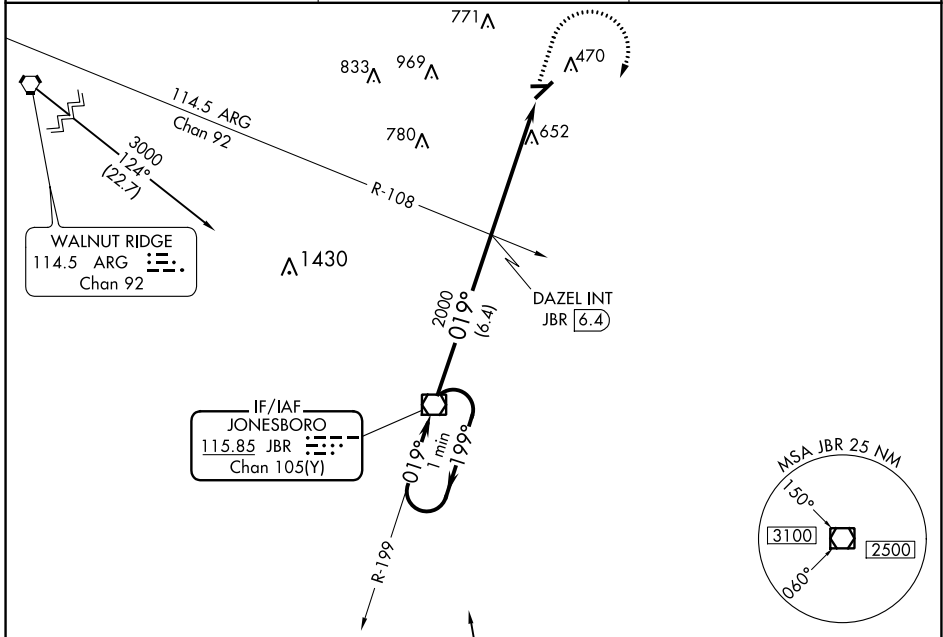
VOR RWY 4

KIRK FLD (PGR)

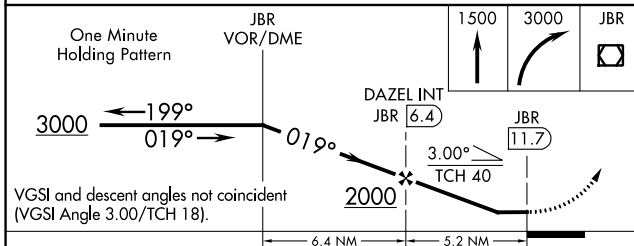
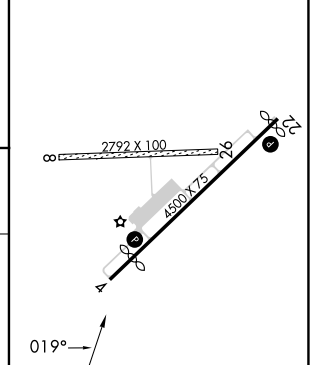
▼ Helicopter visibility reduction below 1 SM NA. Procedure NA at night.
▲ NA Circling NA to Rwy's 8 and 26. Use Jonesboro altimeter setting; when not received, use Walnut Ridge altimeter setting and increase all MDAs 20 feet.

MISSED APPROACH: Climb to 1500 then climbing right turn to 3000 direct JBR VOR/DME and hold.

JBR ASOS 118.525	MEMPHIS CENTER 120.075 289.4	UNICOM 122.8 (CTAF) 0
----------------------------	--	---------------------------------



ELEV 290	TDZE 290
----------	----------



CATEGORY	A	B	C	D
S-4	980-1	690 (700-1)	NA	NA
CIRCLING	980-1 690 (700-1)	1000-1 710 (800-1)	NA	NA

MIRL Rwy 4-22 0	REIL Rwy's 4 and 22 0				
FAF to MAP 5.2 NM					
Knots	60	90	120	150	180
Min:Sec	5:12	3:28	2:36	2:05	1:44

SC-1, 16 MAY 2024 to 13 JUN 2024

SC-1, 16 MAY 2024 to 13 JUN 2024