

WAAS CH 81906 W16A	APP CRS 166°	Rwy ldg TDZE Apt Elev	5201 3432 3459
--	------------------------	-----------------------------	---

RNAV (GPS) Z RWY 16

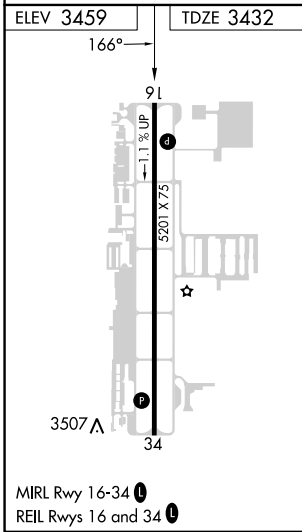
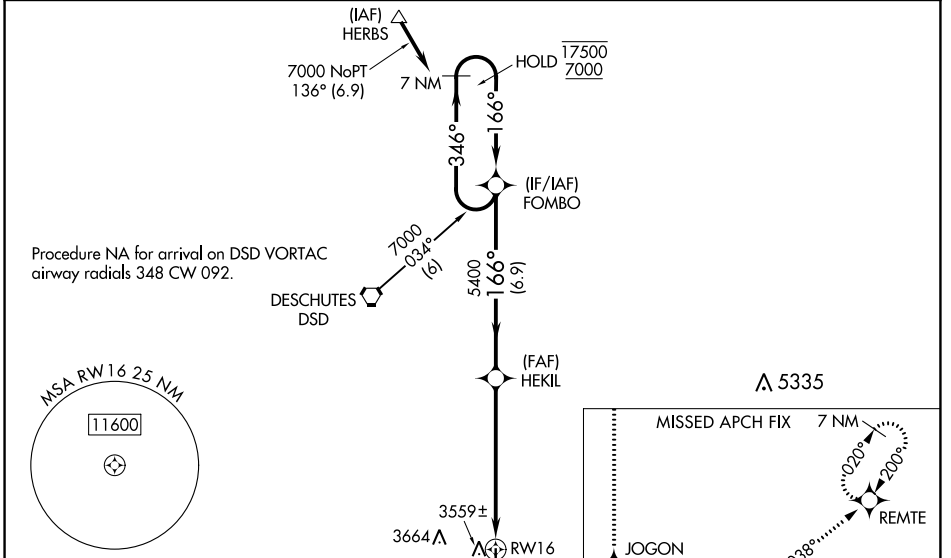
BEND MUNI (BDN)

RNP APCH - GPS.

⚠ Baro-VNAV and VDP NA when using Redmond altimeter setting. Rwy 16 helicopter visibility reduction below $\frac{3}{4}$ SM NA. For uncompensated Baro-VNAV systems, LNAV/VNAV NA below -21°C or above 54°C. When local altimeter setting not received, use Redmond altimeter setting: increase LPV DA to 3763 feet and all visibilities $\frac{1}{4}$ SM; increase LNAV/VNAV DA to 3821 feet and all visibilities $\frac{1}{4}$ SM; increase all MDAs 100 feet and LNAV visibility Cats C and D $\frac{1}{4}$ SM, and Circling visibility Cat C $\frac{1}{2}$ SM.

MISSED APPROACH: Climb to 7400 direct JOGON and on track 087° to MIKKO and on track 038° to REMTE and hold, continue climb-in-hold to 7400.

AWOS-3 134.425	SEATTLE CENTER 126.15 269.475	UNICOM 123.0 (CTAF)
--------------------------	---	-------------------------------



7400 JOGON	MIKKO tr 087°	REMTE tr 038°	VGSI and RNAV glidepath not coincident (VGSI Angle 3.00/TCH 38).		
HEKIL 5400			FOMBO 7 NM Holding Pattern		
RW16 1.2 NM to RW16		5400	346°	17500	
1.2 NM		4.9 NM	166°	7000	
CATEGORY		A	B	C	D
LPV DA		3682- $\frac{3}{4}$		250 (300- $\frac{3}{4}$)	
LNAV/VNAV DA		3740- $\frac{7}{8}$		308 (300- $\frac{7}{8}$)	
LNAV MDA		3820-1		388 (400-1)	
CIRCLING		3960-1		3980-1	
		501 (600-1)		521 (600-1)	
		4120-1 $\frac{3}{4}$		4640-3	
		661 (700-1 $\frac{3}{4}$)		1181 (1200-3)	

NW-1, 16 MAY 2024 to 13 JUN 2024

NW-1, 16 MAY 2024 to 13 JUN 2024