

WAAS CH 58028 W27A	APP CRS 275°	Rwy Idg TDZE Apt Elev	5004 753 754
--	------------------------	-----------------------------	---

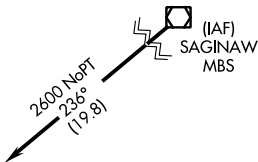
RNAV (GPS) RWY 27

GRATIOT COMMUNITY (AMN)

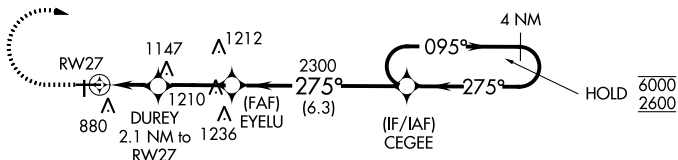
RNP APCH.	MISSED APPROACH: Climb to 1900 then climbing right turn 2600 direct CEGEE and hold.
For uncompensated Baro-VNAV systems, LNAV/VNAV NA below -16°C or above 54°C.	

AWOS-3P 124.175	GREAT LAKES APP CON* 126.45 235.625	UNICOM 122.8 (CTAF) 0
---------------------------	---	---------------------------------

Procedure NA for arrival on MBS
VOR/DME airway radials 238 CW 320.



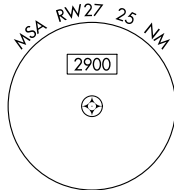
A 1270



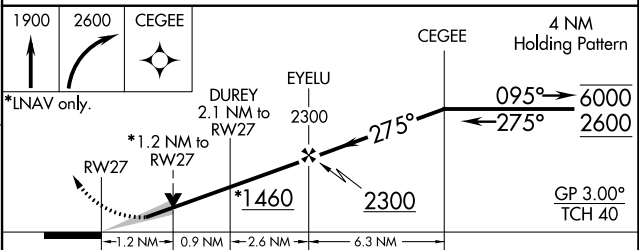
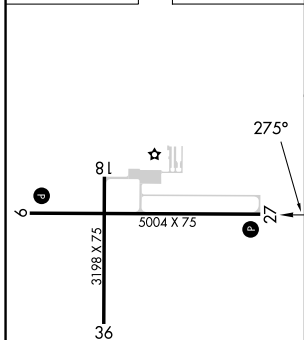
A 1263

A 1272

A 1850



ELEV 754	TDZE 753
----------	----------



CATEGORY	A	B	C	D
LPV DA		1003-1	250 (300-1)	
LNAV/VNAV DA		1036-1	283 (300-1)	
LNAV MDA	1160-1	407 (500-1)	1160-1 1/8	407 (500-1 1/8)

REIL Rwy 9 and 27 0
MIRL Rwy 9-27 and 18-36 0

EC-1, 16 MAY 2024 to 13 JUN 2024

EC-1, 16 MAY 2024 to 13 JUN 2024