

APP CRS	Rwy Idg	<b>3889</b>
<b>167°</b>	TDZE	<b>1165</b>
	Apt Elev	<b>1165</b>

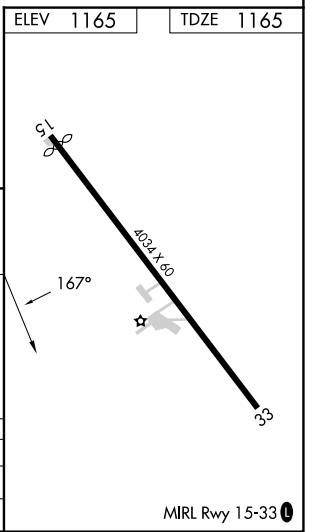
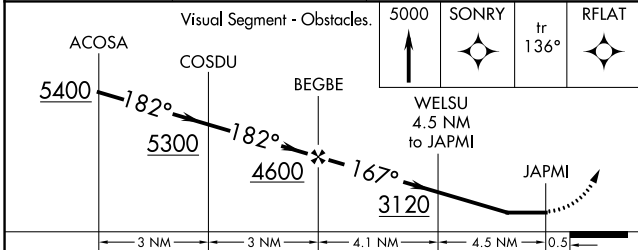
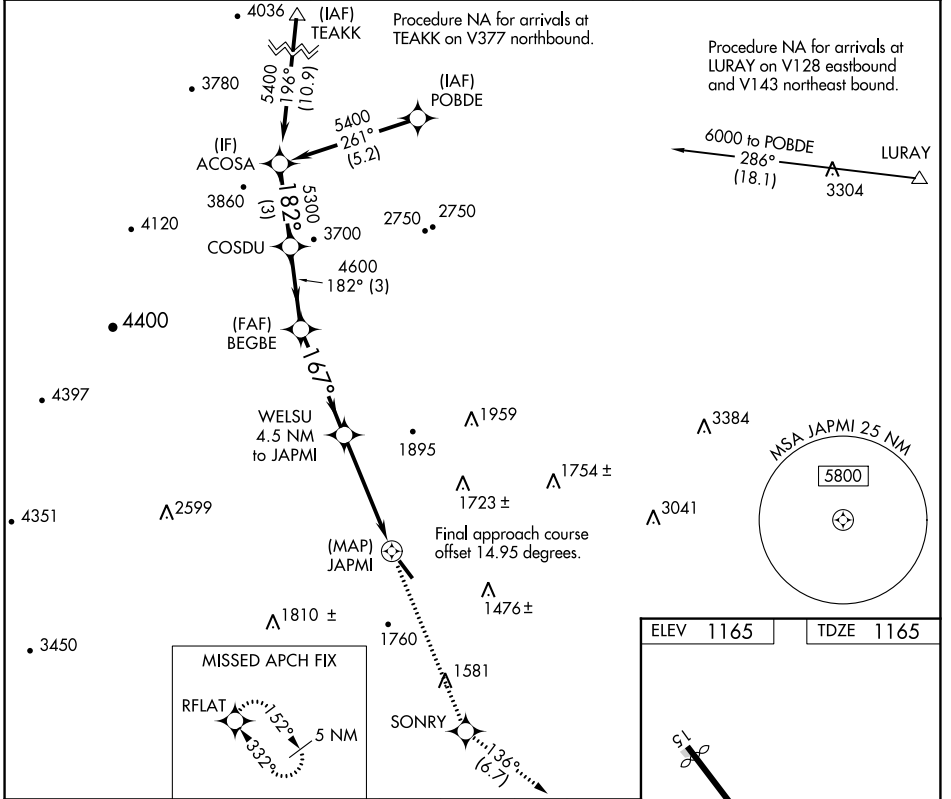
# RNAV (GPS) RWY 15

BRIDGEWATER AIR PARK (VBW)

**NA** DME/DME RNP-0.3 NA. Helicopter visibility reduction below ¾ SM NA. When local altimeter setting not received, use Staunton/Waynesboro/Harrisonburg altimeter setting and increase all MDA 40 feet and visibility Cat B ¼ mile.

**MISSED APPROACH:** Climb to 5000 direct SONRY and on track 136° to RFLAT and hold, continue climb-in-hold to 5000.

AWOS-3 <b>119.55</b>	POTOMAC APP CON <b>132.85 323.125</b>	UNICOM <b>122.7 (CTAF) 0</b>
-------------------------	--	---------------------------------



CATEGORY	A	B	C	D
LNVA MDA	2080-1¼	915 (1000-1¼)	NA	NA
<b>CIRCLING</b>	2080-1¼	915 (1000-1¼)	NA	NA

NE-3, 16 MAY 2024 to 13 JUN 2024

NE-3, 16 MAY 2024 to 13 JUN 2024