

APP CRS	Rwy Idg	<b>4034</b>
<b>332°</b>	TDZE	<b>1165</b>
	Apt Elev	<b>1165</b>

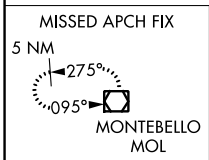
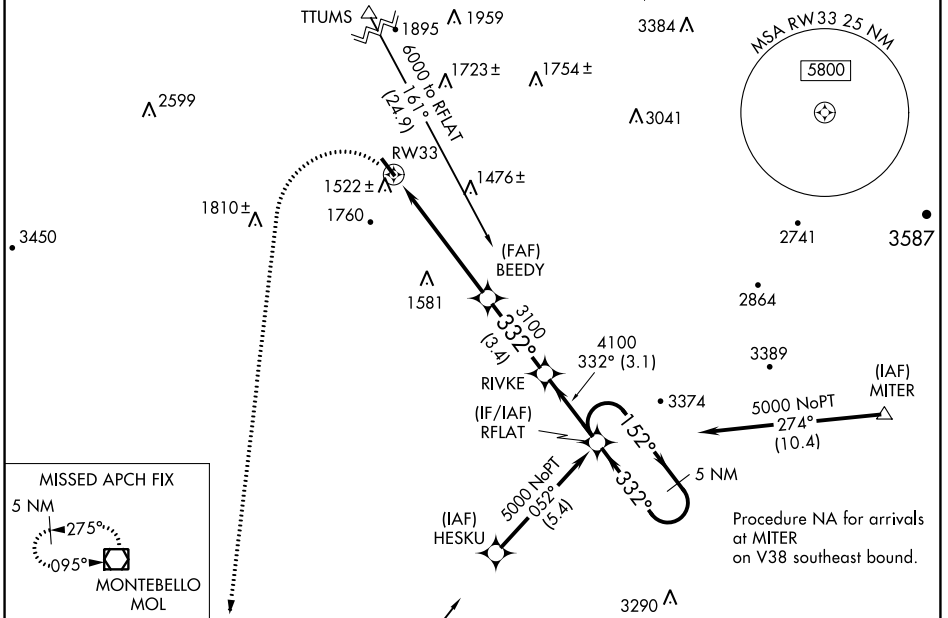
# RNAV (GPS) RWY 33

BRIDGEWATER AIR PARK (VBW)

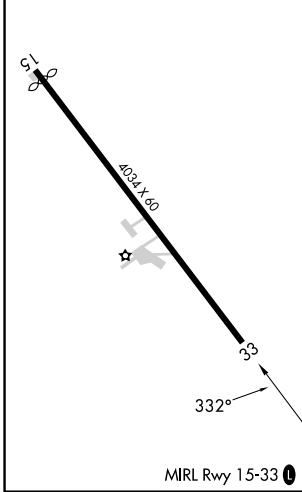
**NA** DME/DME RNP-0.3 NA. Helicopter visibility reduction below  $\frac{3}{4}$  SM NA. When local altimeter setting not received, use Staunton/Waynesboro/Harrisonburg altimeter setting and increase all MDA 40 feet.

MISSED APPROACH: Climbing left turn to 6000 direct MOL VOR/DME and hold.

AWOS-3 <b>119.55</b>	POTOMAC APP CON <b>132.85 323.125</b>	UNICOM <b>122.7 (CTAF)</b>
-------------------------	--	-------------------------------



ELEV 1165	TDZE 1165
-----------	-----------



6000	MOL	RFLAT	5 NM Holding Pattern
		RFLAT	5 NM Holding Pattern
RW33	BEEDY	RIVKE	5000
$\Delta$ 3100	$\Delta$ 4100	$\Delta$ 5000	
3.05° TCH 40			
5.9 NM	3.4 NM	3.1 NM	
CATEGORY	A	B	C D
LNNAV MDA	1780-1	615 (700-1)	NA
<input checked="" type="checkbox"/> CIRCLING	1860-1 695 (700-1)	2020-1 $\frac{1}{4}$ 855 (900-1 $\frac{1}{4}$ )	NA

NE-3, 16 MAY 2024 to 13 JUN 2024

NE-3, 16 MAY 2024 to 13 JUN 2024