

WAAS CH <b>56404</b> <b>W06A</b>	APP CRS <b>054°</b>	Rwy Idg TDZE Apt Elev	<b>5504</b> <b>859</b> <b>859</b>
--	------------------------	-----------------------------	---

# RNAV (GPS) RWY 6

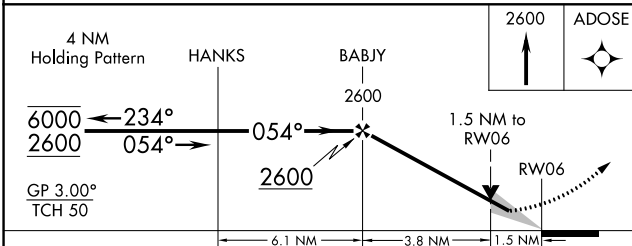
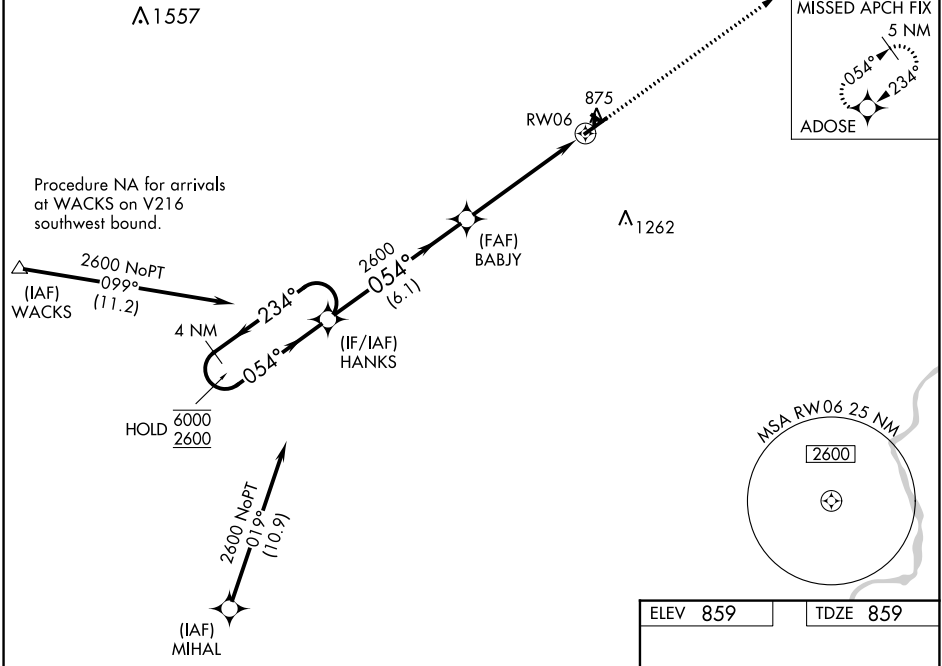
ALBERTUS (FEP)

RNP APCH - GPS.

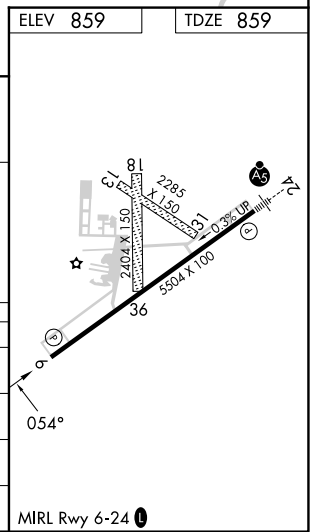
**⚠** Circling NA to Rwy 13, 18, 31, and 36.  
For uncompensated Baro-VNAV systems,  
LNAV/VNAV NA below -16°C or above 54°C.

MISSED APPROACH:  
Climb to 2600 direct  
ADOSE and hold.

AWOS-3 <b>120.525</b>	ROCKFORD APP CON <b>126.0 327.0</b>	CLNC DEL <b>121.85</b>	UNICOM <b>122.8 (CTAF) 0</b>
--------------------------	--	---------------------------	---------------------------------



CATEGORY	A	B	C	D
LPV DA		1109-3/4	250 (300-3/4)	
LNAV/VNAV DA		1371-13/8	512 (600-13/8)	
LNAV MDA	1380-1	521 (600-1)	1380-1 1/2	521 (600-1 1/2)
CIRCLING	1380-1 521 (600-1)	1400-1 541 (600-1)	1440-1 1/2 581 (600-1 1/2)	1620-2 1/2 761 (800-2 1/2)



EC-3, 16 MAY 2024 to 13 JUN 2024

EC-3, 16 MAY 2024 to 13 JUN 2024