

BLUFFTON, OHIO

AL-5665 (FAA)

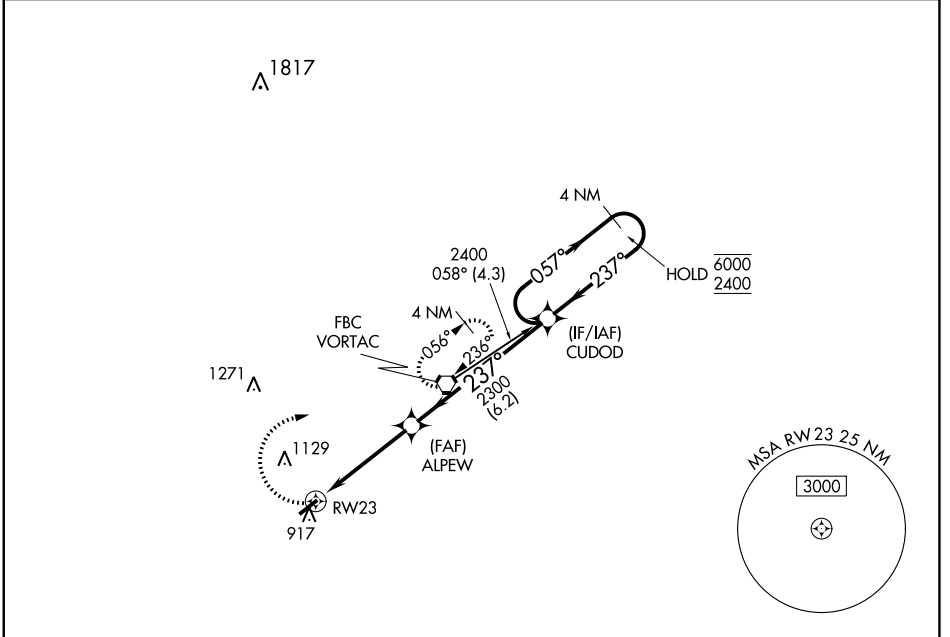
22307

APP CRS 237°	Rwy Idg TDZE Apt Elev	4126 850 851
------------------------	-----------------------------	---

RNAV (GPS) RWY 23

BLUFFTON (5G7)

RNP APCH.	Use Findlay altimeter setting; when not received use Lima altimeter setting and increase all MDA 20 feet and Circling Cat D visibility ¼ SM.	MISSED APPROACH: Climbing right turn to 2500 direct FBC VORTAC and hold.
FDY ASOS 132.85	TOLEDO APP CON 120.8 317.55	UNICOM 122.8 (CTAF)

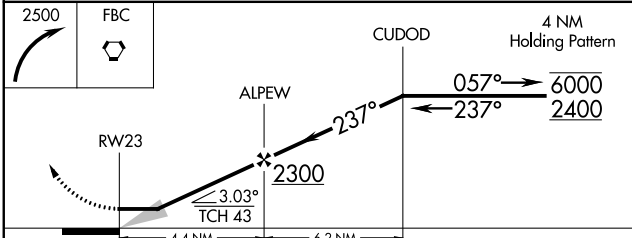


EC-2, 16 MAY 2024 to 13 JUN 2024

EC-2, 16 MAY 2024 to 13 JUN 2024

ELEV 851	TDZE 850
----------	----------

Diagram showing the 4 NM Holding Pattern at 6000 feet (2400 feet MSL) with 057° and 237° legs. The final approach segment is shown with a 3.03° TCH 43 and a 237° heading to RWY 23. Obstacle A 1007 is shown near the holding pattern.



CATEGORY	A	B	C	D
LNVA MDA	1340-1	490 (500-1)	1340-1 3/8 490 (500-1 3/8)	1340-1 1/2 490 (500-1 1/2)
CIRCLING	1360-1 509 (600-1)	1520-1 669 (700-1)	1520-1 3/4 669 (700-1 3/4)	1520-2 669 (700-2)

REIL Rwy 5 and 23
MIRL Rwy 5-23

BLUFFTON, OHIO
Orig-B 26MAR20

40°53'N-83°52'W

BLUFFTON (5G7) RNAV (GPS) RWY 23