

BLUFFTON, OHIO

AL-5665 (FAA)

22307

VORTAC FBC	APP CRS	Rwy Idg	4126
108.2	233°	TDZE	850
Chan 19		Apt Elev	851

# VOR RWY 23

BLUFFTON (5G7)

**▽** Use Findlay altimeter setting; when not received, use Lima altimeter setting and increase all MDA 20 feet, increase S-23 Cat C 1/8 SM and Circling Cat C/D visibility 1/4 SM.

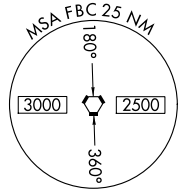
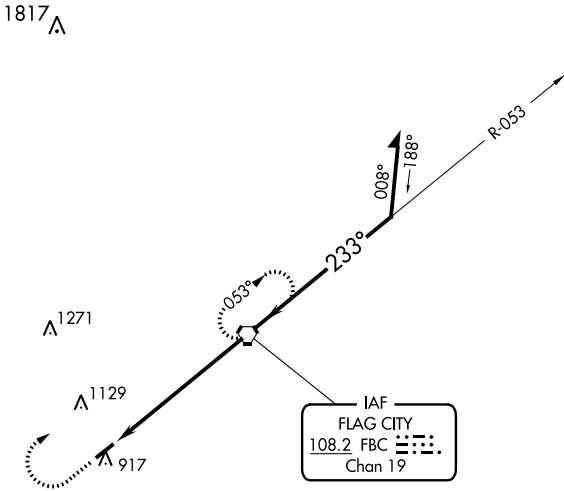
**⚠ NA**

**MISSED APPROACH:** Climb to 2500 then right turn direct FBC VORTAC and hold.

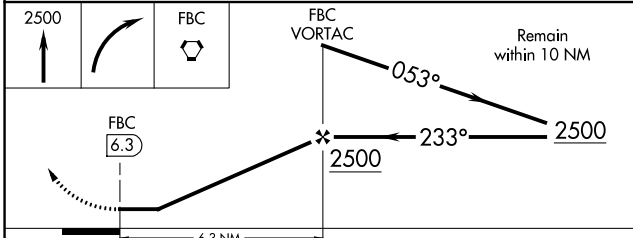
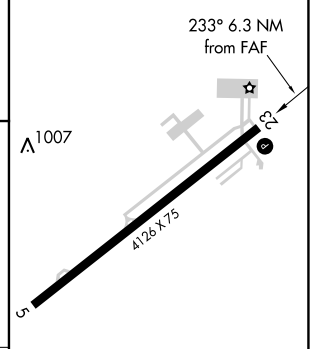
FDY ASOS  
**132.85**

TOLEDO APP CON  
**120.8 317.55**

UNICOM  
**122.8 (CTAF) 0**



ELEV 851	TDZE 850
----------	----------



CATEGORY	A	B	C	D
S-23	1360-1 510 (600-1)		1360-1 1/8 510 (600-1 3/8)	1360-1 1/2 510 (600-1 1/2)
<b>C</b> CIRCLING	1360-1 509 (600-1)	1520-1 669 (700-1)	1520-1 3/4 669 (700-1 3/4)	1520-2 669 (700-2)

REIL Rwy 5 and 23 0  
MIRL Rwy 5-23 0

FAF to MAP 6.3 NM

Knots	60	90	120	150	180
Min:Sec	6:18	4:12	3:09	2:31	2:06

BLUFFTON, OHIO  
Amdt 7B 26MAR20

40°53'N-83°52'W

# BLUFFTON (5G7) VOR RWY 23

EC-2, 16 MAY 2024 to 13 JUN 2024

EC-2, 16 MAY 2024 to 13 JUN 2024