

WAAS CH <b>70441</b> <b>W11A</b>	APP CRS <b>115°</b>	Rwy Idg <b>4099</b> TDZE <b>790</b> Apt Elev <b>790</b>
--	------------------------	---

# RNAV (GPS) RWY 11

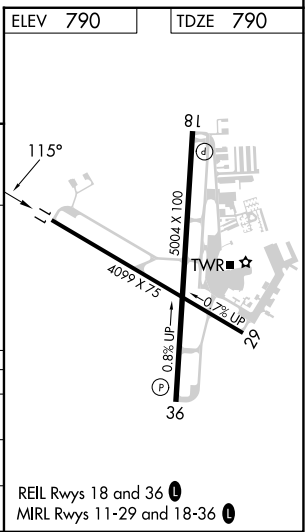
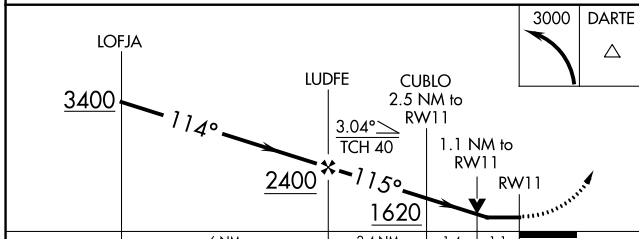
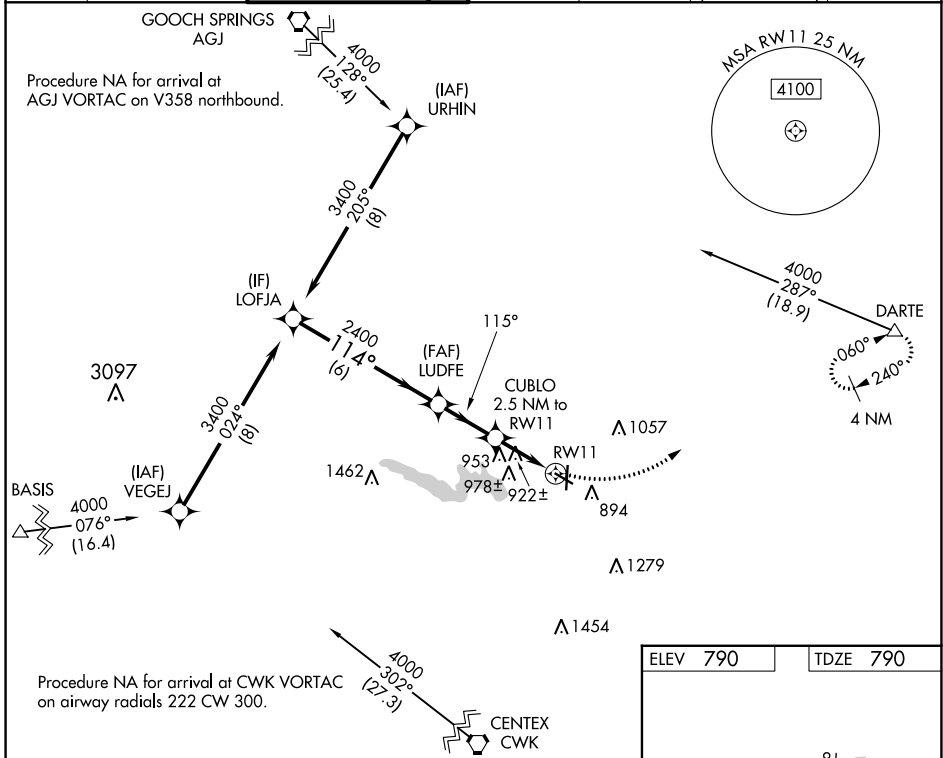
GEORGETOWN EXEC (GTU)

RNP APCH

**▼** Rwy 11 helicopter visibility reduction below 3/4 SM NA. When local altimeter setting not received, use Skylark Field altimeter setting and increase all MDA 80 feet. Increase LP and Circling Cat C/D visibility 1/2 SM and LNAV Cat C/D visibility 1/8 SM. VDP NA when using Skylark Field altimeter setting.

**MISSED APPROACH:**  
Climbing left turn to 3000 direct DARTE and hold.

ATIS <b>118.6</b>	AUSTIN APP CON <b>119.0 370.85</b>	GEORGETOWN TOWER * <b>120.225</b> (CTAF) <b>0</b>	GND CON <b>119.125</b>	CLNC DEL <b>119.125</b>	CLNC DEL <b>121.1</b> (when twr closed)	UNICOM <b>123.0</b>
----------------------	---------------------------------------	--	---------------------------	----------------------------	---	------------------------



CATEGORY	A	B	C	D
LP MDA	1180-1	390 (400-1)	1180-1 1/8	390 (400-1 1/8)
LNAV MDA	1220-1	430 (500-1)	1220-1 1/4	430 (500-1 1/4)
<b>C</b> CIRCLING	1240-1 450 (500-1)	1340-1 550 (600-1)	1360-1 1/2 570 (600-1 1/2)	1640-2 3/4 850 (900-2 3/4)

REIL Rwy 18 and 36 **0**  
MIRL Rwy 11-29 and 18-36 **0**

SC-3, 16 MAY 2024 to 13 JUN 2024

SC-3, 16 MAY 2024 to 13 JUN 2024