

NDB UMB 380	APP CRS 276°	Rwy Idg TDZE Apt Elev 5424 379 385
-----------------------	------------------------	--

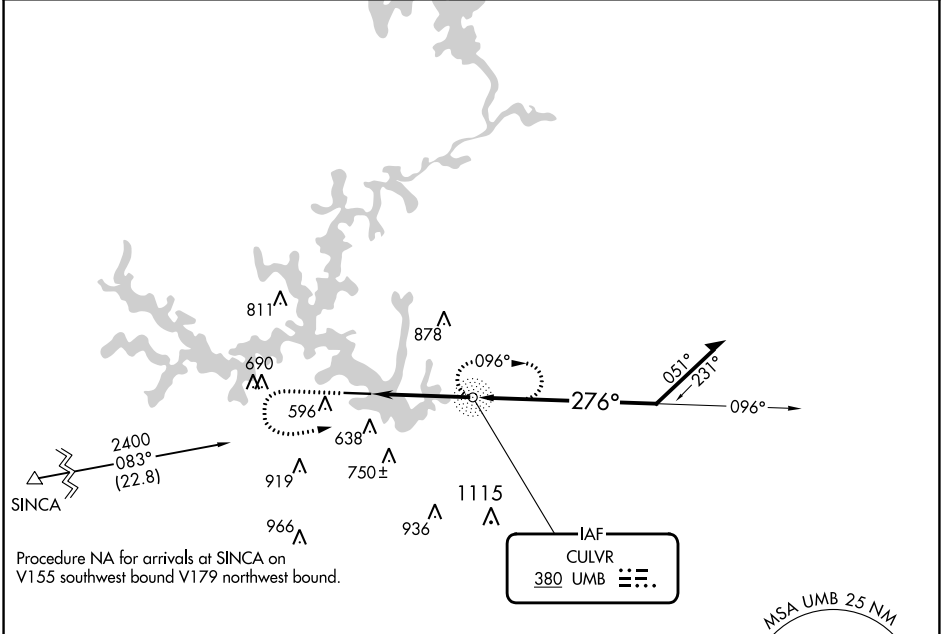
NDB RWY 28

BALDWIN COUNTY RGNL (MLJ)

⚠ Rwy 28 helicopter visibility reduction below 3/4 SM NA.

⚠ MISSED APPROACH: Climb to 1400 then climbing left turn to 2400 direct UMB NDB and hold, continue climb-in-hold to 2400.

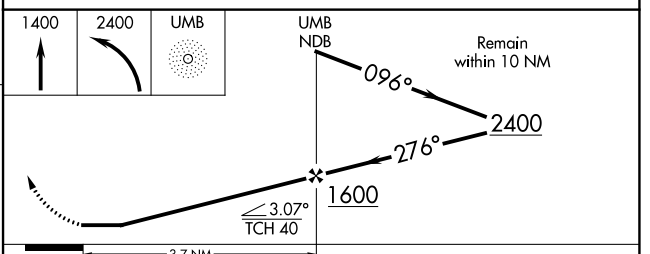
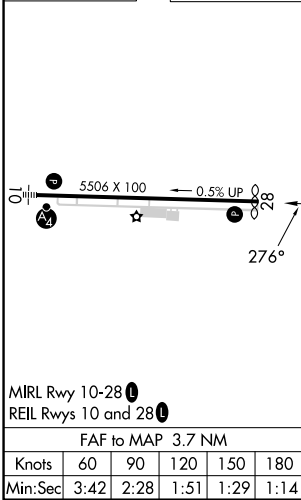
AWOS-3 120.925	ATLANTA APP CON ★ 124.2 279.6	UNICOM 122.975 (CTAF) 0
--------------------------	---	-----------------------------------



SE-4, 16 MAY 2024 to 13 JUN 2024

SE-4, 16 MAY 2024 to 13 JUN 2024

ELEV 385	TDZE 379
----------	----------



MIRL Rwy 10-28 0				
REIL Rwys 10 and 28 0				
FAF to MAP 3.7 NM				
Knots	60	90	120	150
Min:Sec	3:42	2:28	1:51	1:29
				1:14
C CIRCLING	940-1	561 (600-1)	940-1 5/8	561 (600-1 5/8)
	940-1	555 (600-1)	1080-2	1280-3
			695 (700-2)	895 (900-3)