

TULLAHOMA, TENNESSEE

# RNAV (GPS) RWY 3

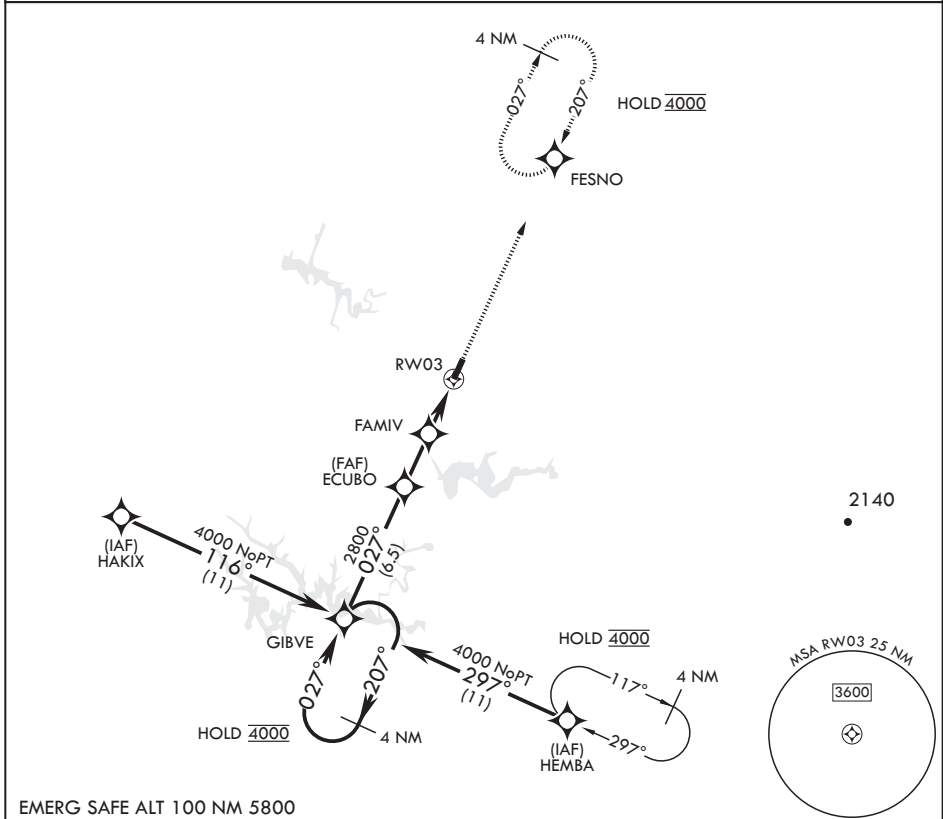
APCH CRS	Rwy Idg	6001
027°	TDZE	1065
	Arprt Elev	1065

- (USAF)

ARNOLD AFB (KAYX)

RNP APCH	MISSED APPROACH: Climb to 4000 direct FESNO and hold, continue climb-in-hold to 4000.
* Circling not authorized NW of RWY 3-21.	

UNICOM  
126.2 (CTAF) 257.975 (CTAF)



4 NM Holding Pattern	GIBVE	4000	207°	ECUBO	2800	FAMIV	2000	1 NM to RW03	RW03	4000	FESNO	ELEV 1065	TDZE 1065
<p>† FAMIV to RW03 3.12° ≥ † TCH 40</p> <p>2.6 NM      2.7 NM</p>													
CATEGORY	A	B	C	D									
LNAV MDA	1420-1		355		(400-1)								
CIRCLING*	1520-1 455 (500-1)	1620-1 555 (600-1)	1640-1½ 575 (600-1½)	1800-2¼ 735 (800-2¼)									

HIRL all Rwys  
REIL all Rwys

TULLAHOMA, TENNESSEE

35°24'N - 86°05'W

ARNOLD AFB (KAYX)

Orig 19MAY22

# RNAV (GPS) RWY 3

SE-1, 16 MAY 2024 to 13 JUN 2024

SE-1, 16 MAY 2024 to 13 JUN 2024