

WAAS CH 40120 W36A	APP CRS 003°	Rwy Idg 5404 TDZE 173 Apt Elev 173
--	------------------------	---

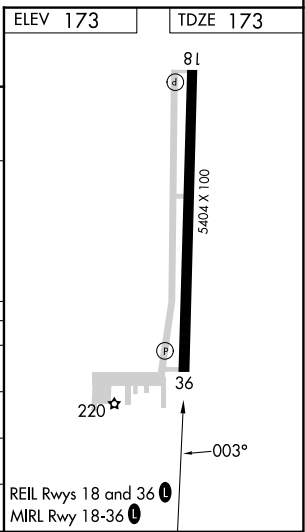
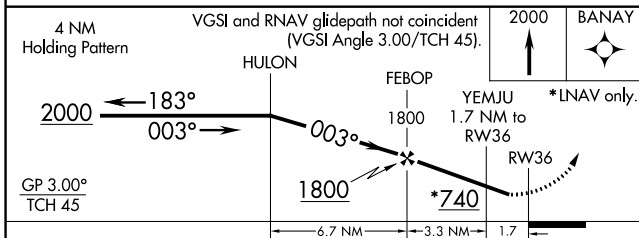
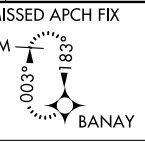
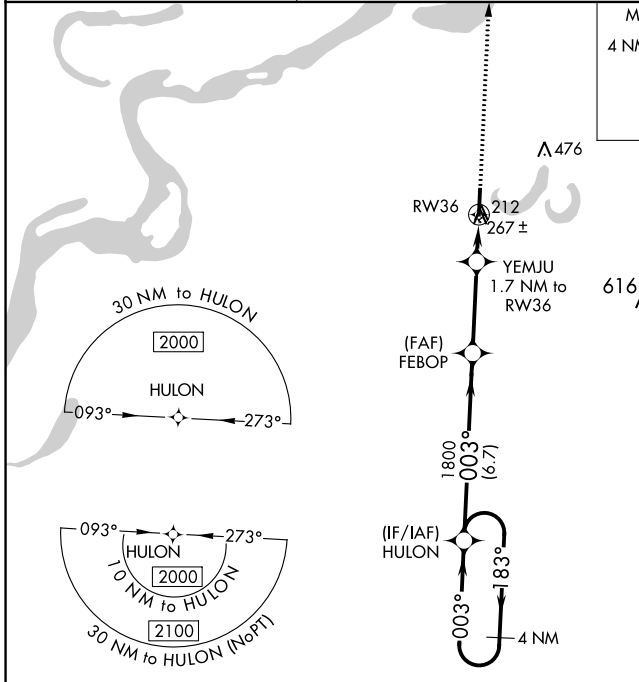
RNAV (GPS) RWY 36

FLETCHER FLD (CKM)

⚠ For uncompensated Baro-VNAV systems, LNAV/VNAV NA below -15°C (5°F) or above 54°C (130°F). DME/DME RNP-0.3 NA. When local altimeter setting not received, use Tunica altimeter setting: increase LPV DA to 537 feet, LNAV/VNAV DA to 508 feet and all MDA 60 feet; increase LPV all Cats visibility ¼ SM, LNAV/VNAV all Cats visibility ⅓ SM, and LNAV Cat C/D visibility ½ SM. Baro-VNAV NA with Tunica altimeter setting. Straight-in/Circling Rwy 36 NA at night. Rwy 36 helicopter visibility reduction below 1 SM NA.

MISSED APPROACH:
Climb to 2000 direct BANAY and hold.

AWOS-3 120.675	MEMPHIS CENTER 135.3 335.8	UNICOM 122.8 (CTAF) 0
--------------------------	--------------------------------------	---------------------------------



CATEGORY	A	B	C	D
LPV DA		477-1	304 (400-1)	
LNAV/VNAV DA		448-1	275 (300-1)	
LNAV MDA		520-1	347 (400-1)	
C CIRCLING	740-1	567 (600-1)	780-1¾ 607 (700-1¾)	780-2 607 (700-2)

SC-4, 16 MAY 2024 to 13 JUN 2024

SC-4, 16 MAY 2024 to 13 JUN 2024