

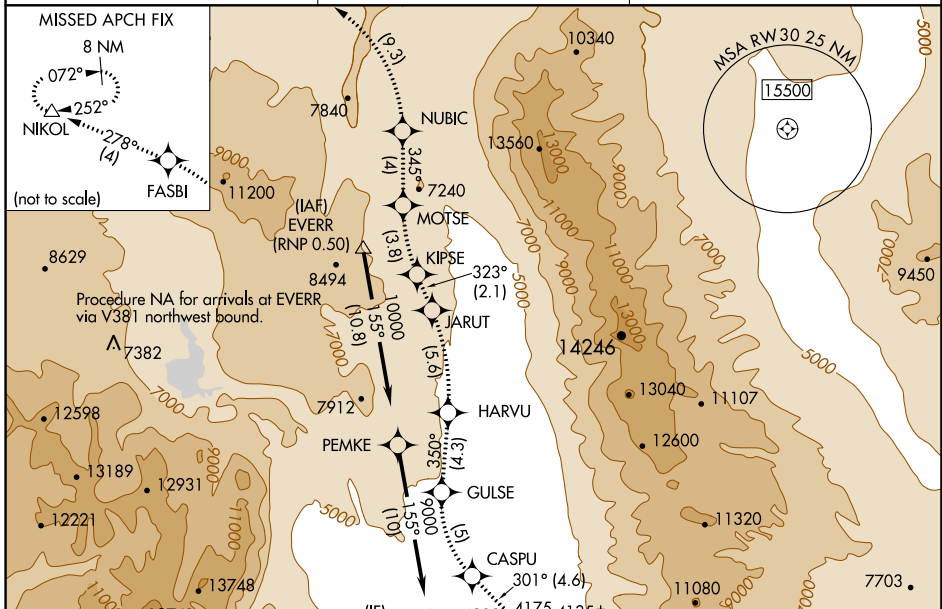
APP CRS	Rwy Idg	<b>6743</b>
<b>301°</b>	TDZE	<b>4111</b>
	Apt Elev	<b>4124</b>

# RNAV (RNP) RWY 30

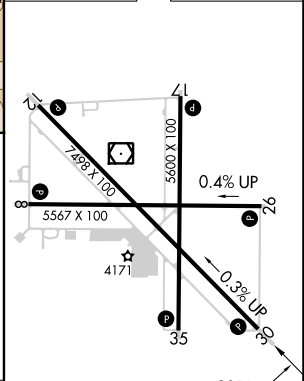
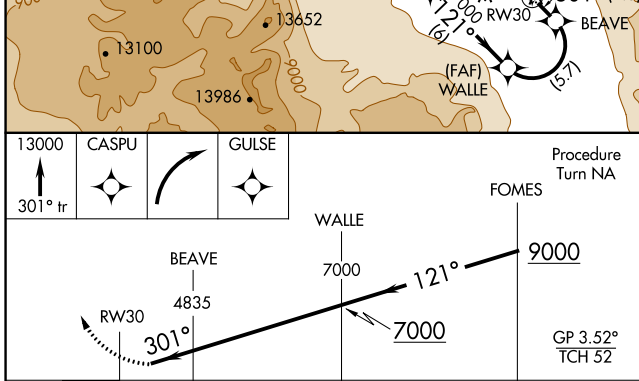
BISHOP (BIH)

RNP AR APCH, RF required.		<p>MISSED APPROACH: Climb to 13000 via 301° track to CASPU, right turn to GULSE, 350° track to HARVU, left turn to JARUT, 323° track to KIPSE, right turn to MOTSE, 345° track to NUBIC, left turn to FASBI, 278° track to NIKOL and hold.</p>
<p><b>NA</b></p> <p>For uncompensated Baro-VNAV systems, procedure NA below -12°C or above 54°C.</p>		

ASOS <b>119.025</b>	OAKLAND CENTER <b>125.75 284.65</b>	UNICOM <b>123.0 (CTAF)</b>
------------------------	--	-------------------------------



ELEV 4124	<b>D</b>	TDZE 4111
-----------	----------	-----------



CATEGORY	A	B	C	D
RNP 0.30 DA	4476-1	365 (400-1)		NA

## AUTHORIZATION REQUIRED

MIRL Rwy's 8-26, 12-30, and 17-35  
REIL Rwy's 12, 17, 30 and 35

SW-2, 16 MAY 2024 to 13 JUN 2024

SW-2, 16 MAY 2024 to 13 JUN 2024