

CAIRO, ILLINOIS

AL-5738 (FAA)

23278

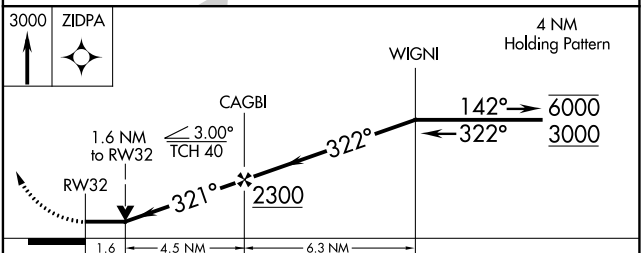
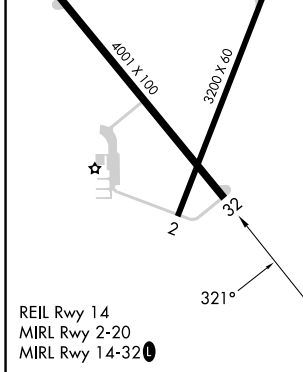
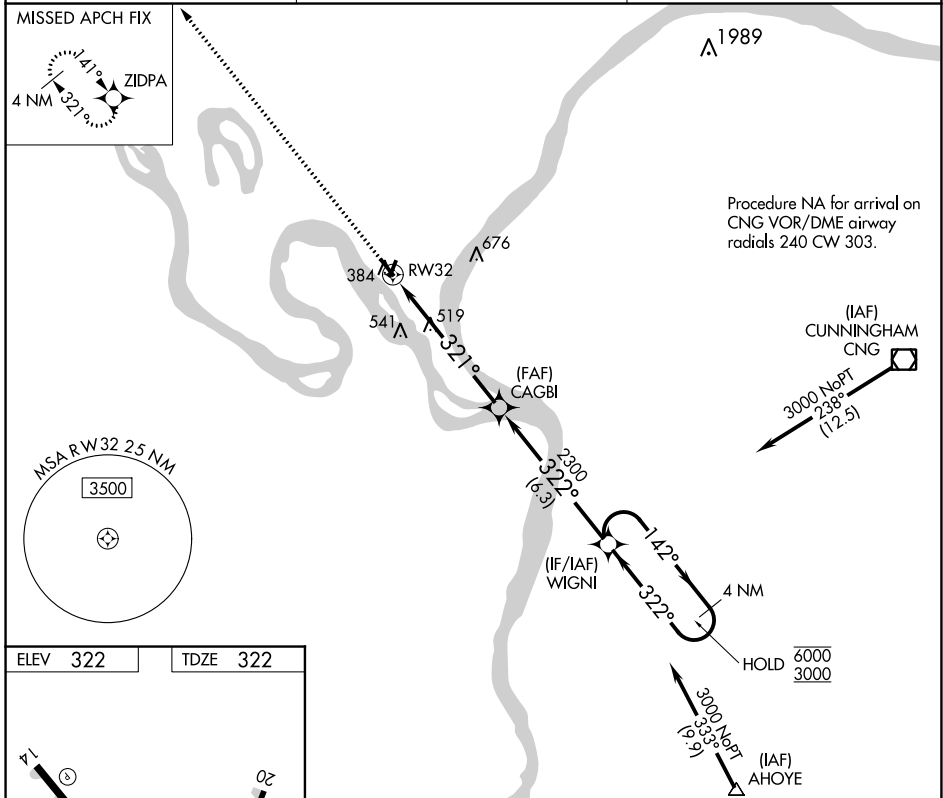
APP CRS	Rwy Idg	4001
321°	TDZE	322
	Apt Elev	322

RNAV (GPS) RWY 32

CAIRO RGNL (CIR)

RNP APCH - GPS.	MISSED APPROACH: Climb to 3000 direct ZIDPA and hold.
<p>▼ Circling Rwy 14, 20 NA at night. Rwy 32 helicopter visibility reduction below 3/4 SM NA.</p> <p>▲ Straight-in Rwy 32 and Circling Rwy 32 NA at night.</p>	

AWOS-3 118.025	MEMPHIS CENTER 133.65 292.15	UNICOM 122.8 (CTAF) 0
--------------------------	--	---------------------------------



CATEGORY	A	B	C	D
LNNAV MDA	860-1	538 (600-1)	860-1½ 538 (600-1½)	NA
C CIRCLING	860-1 538 (600-1)	900-1 578 (600-1)	1020-2 698 (700-2)	NA

CAIRO, ILLINOIS
Orig-C 07OCT21

37°04'N-89°13'W

CAIRO RGNL (CIR) RNAV (GPS) RWY 32

EC-3, 16 MAY 2024 to 13 JUN 2024

EC-3, 16 MAY 2024 to 13 JUN 2024