

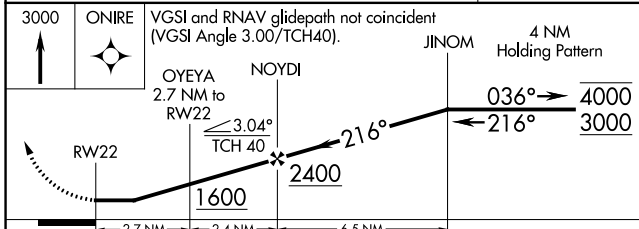
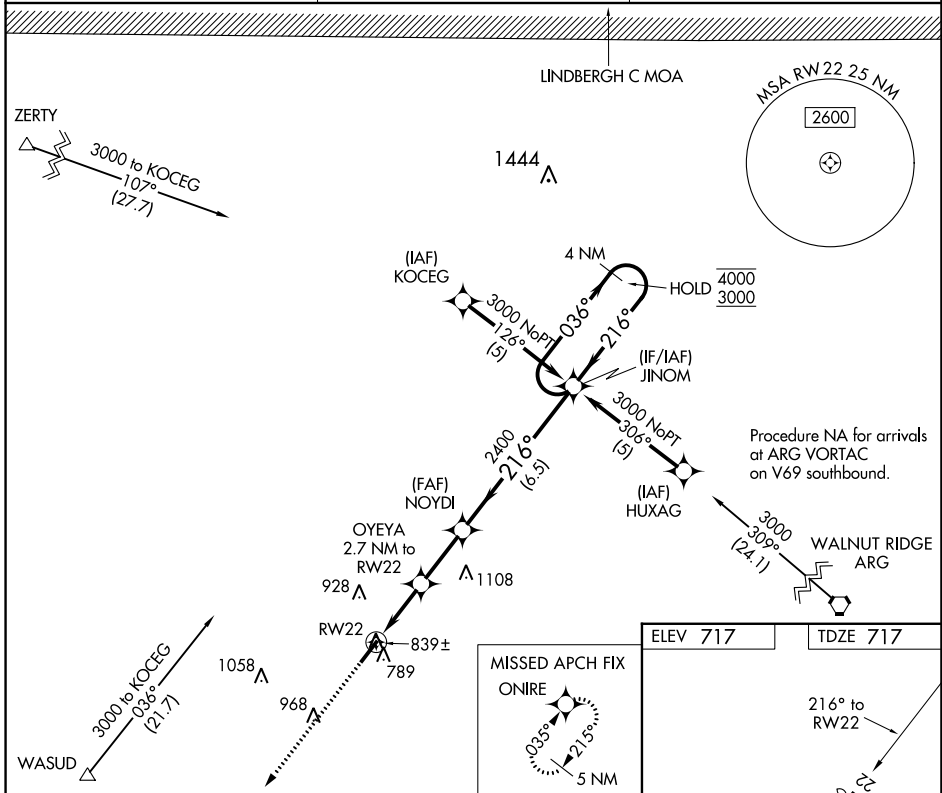
APP CRS	Rwy Idg	5004
216°	TDZE	717
	Apt Elev	717

RNAV (GPS) RWY 22

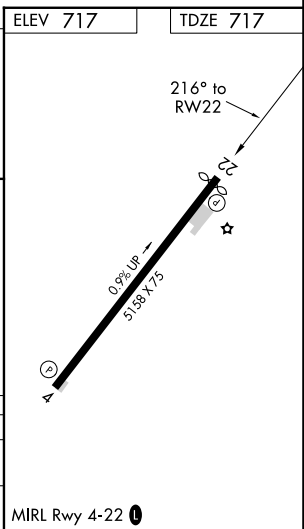
SHARP COUNTY RGNL (CVK)

RNP APCH.	<p>▼ Rwy 22 helicopter visibility reduction below $\frac{3}{4}$ SM NA. Circling Rwy 4 NA at night. Use Walnut Ridge Rgnl altimeter setting; when not received, use Jonesboro Municipal altimeter setting and increase all MDAs 60 feet, increase LNAV Cat C visibility $\frac{1}{8}$ SM and Circling Cat C visibility $\frac{1}{4}$ SM.</p>	MISSED APPROACH: Climb to 3000 direct ONIRE and hold.
-----------	---	---

ARG AWOS-3PT 126.525	MEMPHIS CENTER 120.075 289.4	UNICOM 122.7 (CTAF) 0
--------------------------------	--	---------------------------------



CATEGORY	A	B	C	D
LNAV MDA	1360-1	643 (700-1)	1360-1 $\frac{1}{8}$ 643 (700-1 $\frac{1}{8}$)	NA
CIRCLING	1400-1	683 (700-1)	1420-2 703 (800-2)	NA



SC-1, 16 MAY 2024 to 13 JUN 2024

SC-1, 16 MAY 2024 to 13 JUN 2024