

WAAS CH 53739 W21A	APP CRS 210°	Rwy Idg TDZE Apt Elev	5501 668 671
--	------------------------	-----------------------------	---

RNAV (GPS) RWY 21

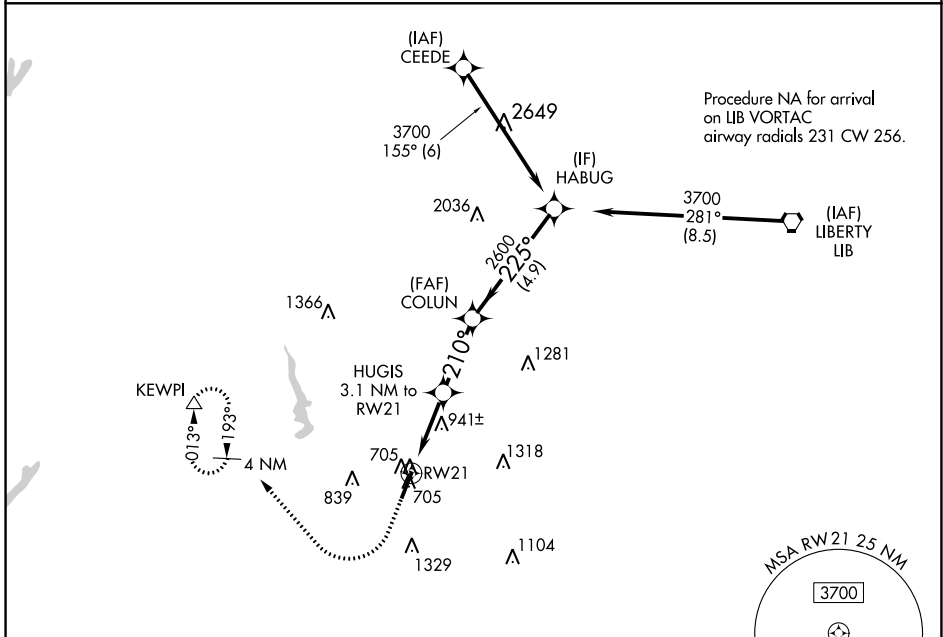
ASHEBORO RGNL (HBI)

RNP APCH-GPS.

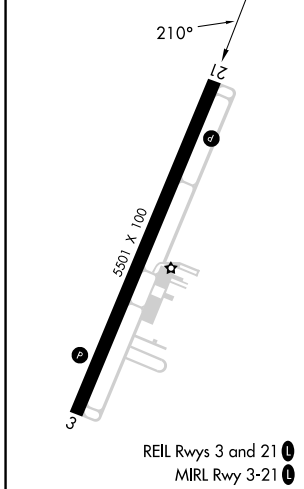
▼ For uncompensated Baro-VNAV systems, LNAV/VNAV NA below -16°C (4°F) or above 54°C (130°F). Rwy 21 helicopter visibility reduction below 3/4 SM NA.

MISSED APPROACH: Climb to 3000 then right turn direct KEWPI and hold.

AWOS-3 119.275	GREENSBORO APP CON 126.6 327.075	UNICOM 122.8 (CTAF) 0
--------------------------	--	--



ELEV 671	TDZE 668
----------	----------



3000	↑	KEWPI	△	HABUG	3700
*LNAV only.		HUGIS 3.1 NM to RW21	COLUN 2600	225°	
RW21		*1.6 NM to RW21	*1680	2600	GP 3.00° TCH 40
1.6 NM		1.5 NM	2.8 NM	4.9 NM	
CATEGORY	A	B	C	D	
LPV DA		918-3/4	250 (300-3/4)		
LNAV/VNAV DA		1069-1/8	401 (400-1/8)		
LNAV MDA	1220-1	552 (600-1)	1220-15/8	552 (600-15/8)	
<input checked="" type="checkbox"/> CIRCLING	1300-1 629 (700-1)	1360-1 689 (700-1)	1680-3	1009 (1100-3)	

SE-2, 16 MAY 2024 to 13 JUN 2024

SE-2, 16 MAY 2024 to 13 JUN 2024