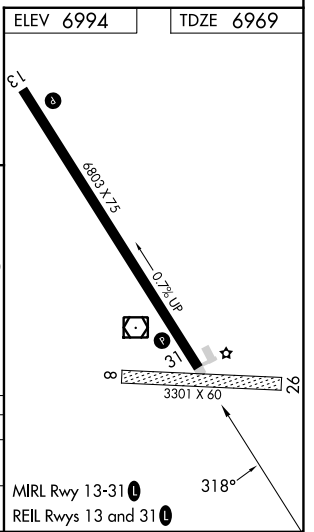
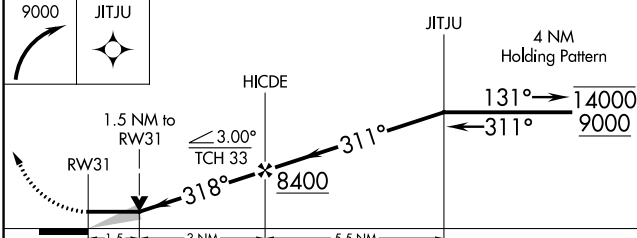
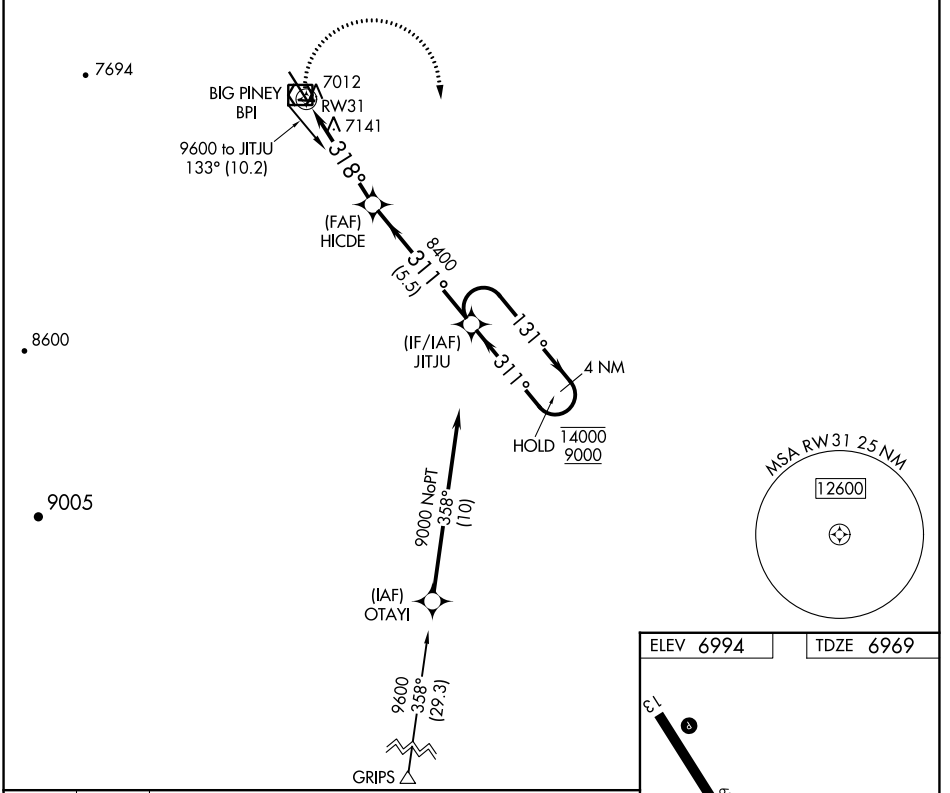


APP CRS	Rwy Idg	6803
318°	TDZE	6969
	Apt Elev	6994

RNAV (GPS) RWY 31

MILEY MEML FLD (BPI)

RNP APCH - GPS.		MISSED APPROACH: Climbing right turn to 9000 direct JITJU and hold.	
Circling NA to Rwys 8 and 26.		ASOS	SALT LAKE CENTER
135.225	128.35 239.25	UNICOM	122.70
		122.8 (CTAF)	



CATEGORY	A	B	C	D
LNVA MDA	7460-1	491 (500-1)	7460-1 $\frac{3}{8}$	491 (500-1 $\frac{3}{8}$)
CIRCLING	7460-1 466 (500-1)	7560-1 566 (600-1)	7800-2 $\frac{1}{4}$ 806 (900-2 $\frac{1}{4}$)	7820-2 $\frac{3}{4}$ 826 (900-2 $\frac{3}{4}$)

NW-1, 16 MAY 2024 to 13 JUN 2024

NW-1, 16 MAY 2024 to 13 JUN 2024