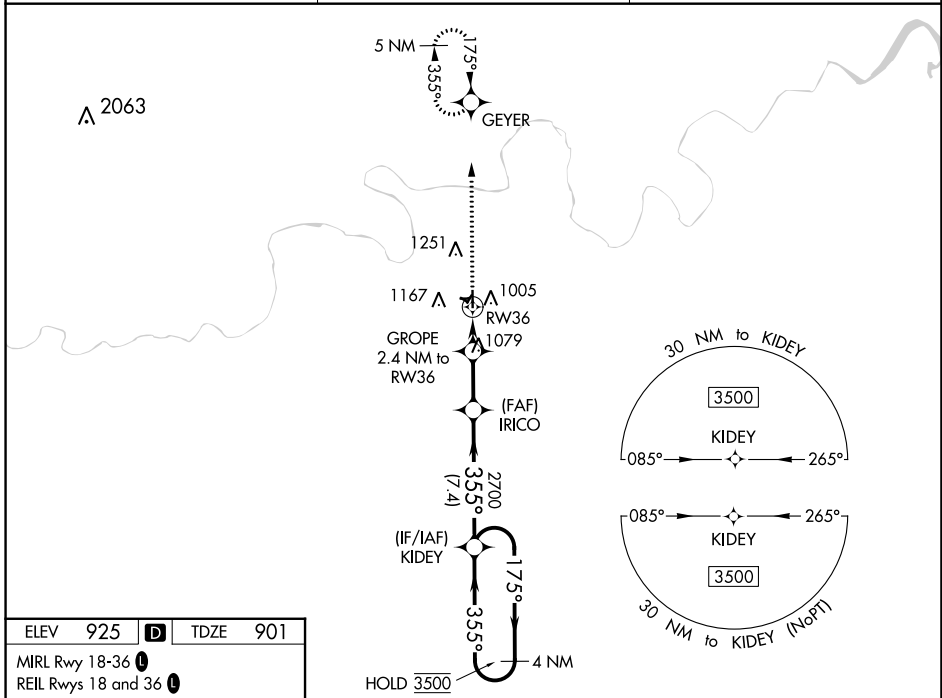


WAAS CH 90142 W36A	APP CRS 355°	Rwy Idg TDZE Apt Elev	4986 901 925
--	------------------------	-----------------------------	---

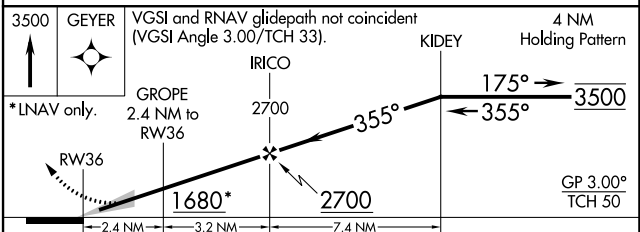
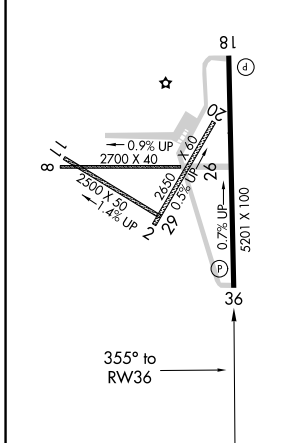
RNAV (GPS) RWY 36

CUSHING MUNI (CUH)

RNP APCH.		MISSED APPROACH: Climb to 3500 direct GEYER and hold, continue to climb-in-hold to 3500.
AWOS-3PT 118.25	KANSAS CITY CENTER 127.8 319.1	UNICOM 122.8 (CTAF)



ELEV 925	D	TDZE 901
MIRL Rwy 18-36		REIL Rwys 18 and 36



CATEGORY	A	B	C	D
LPV DA	1151-7/8		250 (300-7/8)	
LNAV/VNAV DA	1284-1 1/4		383 (400-1 1/4)	
LNAV MDA	1340-1	439 (500-1)	1340-1 1/4	439 (500-1 1/4)
C CIRCLING	1600-1	675 (700-1)	1600-2 675 (700-2)	1600-2 1/4 675 (700-2 1/4)

SC-1, 16 MAY 2024 to 13 JUN 2024

SC-1, 16 MAY 2024 to 13 JUN 2024