

APP CRS	Rwy Idg	3460
180°	TDZE	205
	Apt Elev	205

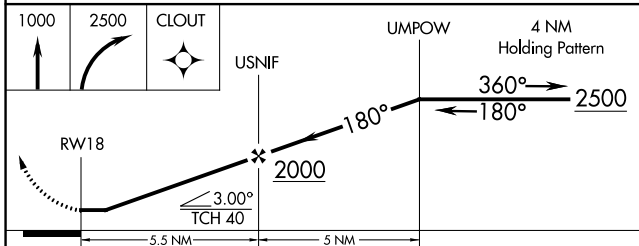
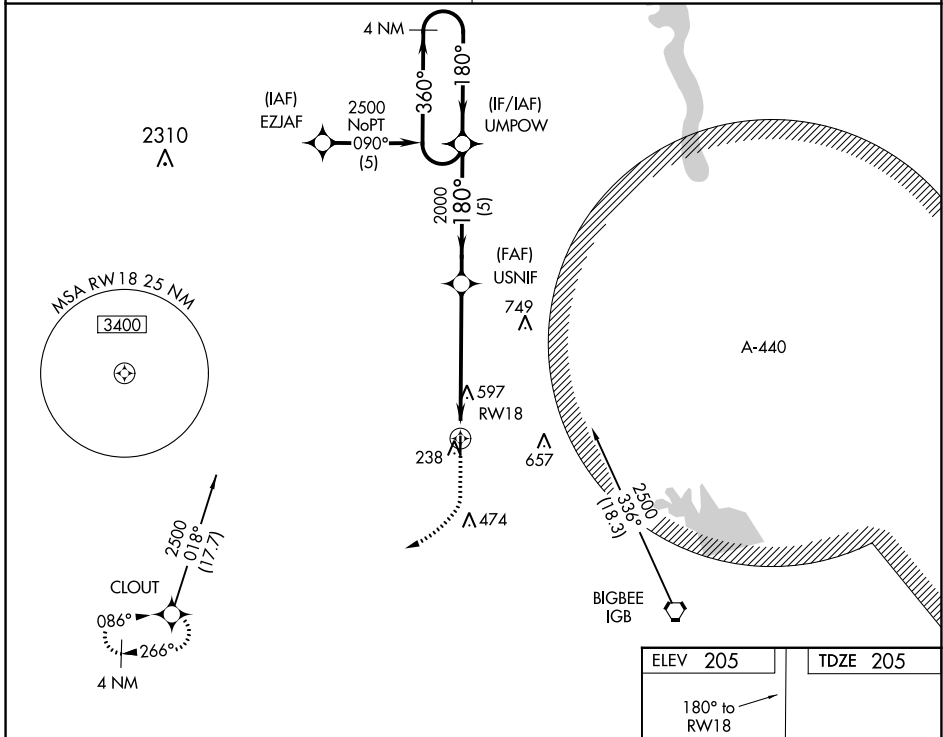
RNAV (GPS) RWY 18

MCCHAREN FLD (M83)

▼ Use Golden Triangle Rgnl altimeter setting, when not received, use Columbus AFB altimeter setting. DME/DME RNP-0.3 NA. Helicopter visibility reduction below 1 SM NA. Procedure NA at night.

▲ NA MISSED APPROACH: Climb to 1000 then climbing right turn to 2500 direct CLOUT and hold.

COLUMBUS APP CON* 135.6 323.275	CTAF 122.9
--	-----------------------------



ELEV 205	TDZE 205
180° to RW18	
81	
3650 X 75	
36	
MIRL Rwy 18-36	

CATEGORY	A	B	C	D
GLS DA		NA		
LNAV/VNAV DA		NA		
LNAV MDA	980-1 775 (800-1)	980-1¼ 775 (800-1¼)	980-2½ 775 (800-2½)	NA
CIRCLING	980-1 775 (800-1)	1020-1¼ 815 (900-1¼)	1020-2½ 815 (900-2½)	NA

SC-4, 16 MAY 2024 to 13 JUN 2024

SC-4, 16 MAY 2024 to 13 JUN 2024