

WAAS CH 72924 W02A	APP CRS 017°	Rwy Idg 5000 TDZE 361 Apt Elev 365
---------------------------------	------------------------	---

RNAV (GPS) RWY 2

FITZGERALD MUNI (FZG)

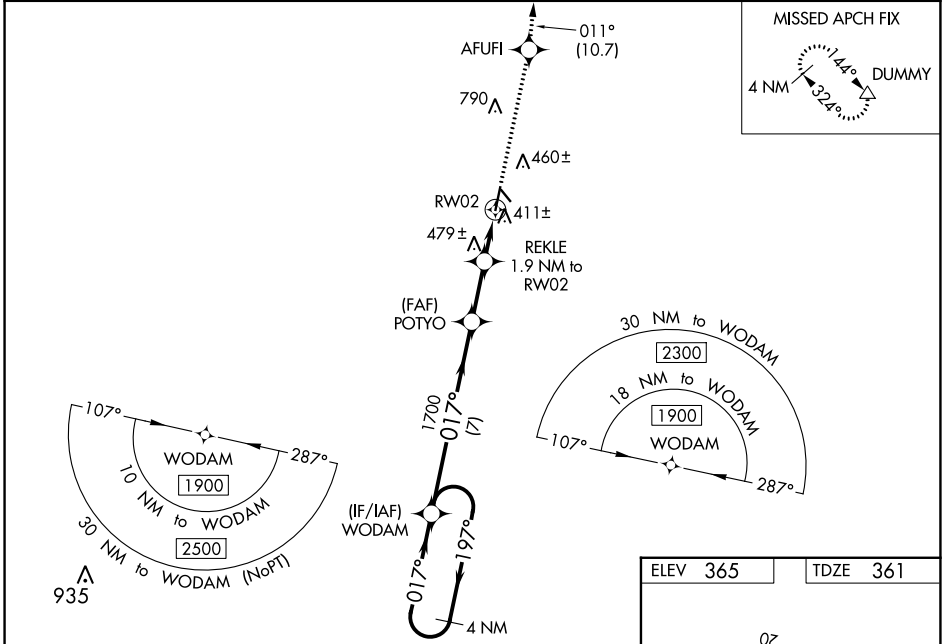
RNP APCH - GPS.

▼ Circling NA to Rwy's 15 and 33. Baro-VNAV and VDP NA when using Tifton altimeter setting.
▲ For uncompensated Baro-VNAV systems, LNAV/VNAV NA below -15°C or above 54°C.
 When local altimeter setting not received, use Tifton altimeter setting: increase LPV DA to 656 feet and LNAV/VNAV DA to 691 feet; increase LNAV/VNAV all Cats visibility 1/8 SM, increase all MDAs 60 feet and LNAV visibility Cats C/D 1/8 SM, and Circling Cats C/D visibility 1/4 SM. Inop table does not apply to LPV all Cats and LNAV Cats C/D. For inop ALS increase LNAV/VNAV Cats A/B visibility to 3/8 SM. For inop ALS when using Tifton altimeter setting increase LPV Cats A/B visibility to 3/8 SM and LNAV/VNAV Cats A/B visibility to 1 SM.



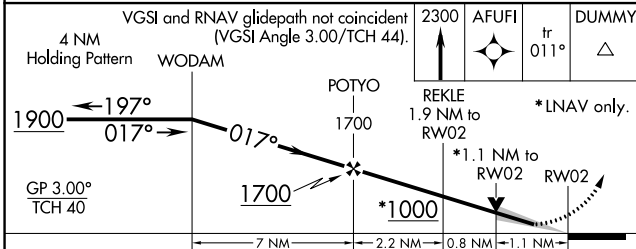
MISSED APPROACH:
 Climb to 2300 direct AFUFI and on track 011° to DUMMY and hold.

AWOS-3 118.625	JACKSONVILLE CENTER 127.575 269.025	UNICOM 123.0 (CTAF)
--------------------------	---	-------------------------------

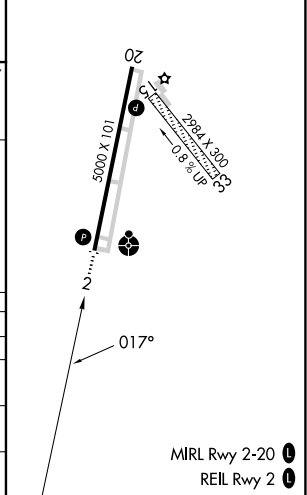


SE-4, 16 MAY 2024 to 13 JUN 2024

SE-4, 16 MAY 2024 to 13 JUN 2024



ELEV 365	TDZE 361
----------	----------



CATEGORY	A	B	C	D
LPV DA		611-3/4	250 (300-3/4)	
LNAV/VNAV DA		646-3/4	285 (300-3/4)	
LNAV MDA	740-3/4	379 (400-3/4)	740-1	379 (400-1)
CIRCLING	880-1	515 (600-1)	1160-2 1/4 795 (800-2 1/4)	1160-2 1/2 795 (800-2 1/2)