

APP CRS	Rwy Idg	4002
240°	TDZE	632
	Apt Elev	632

RNAV (GPS) RWY 24

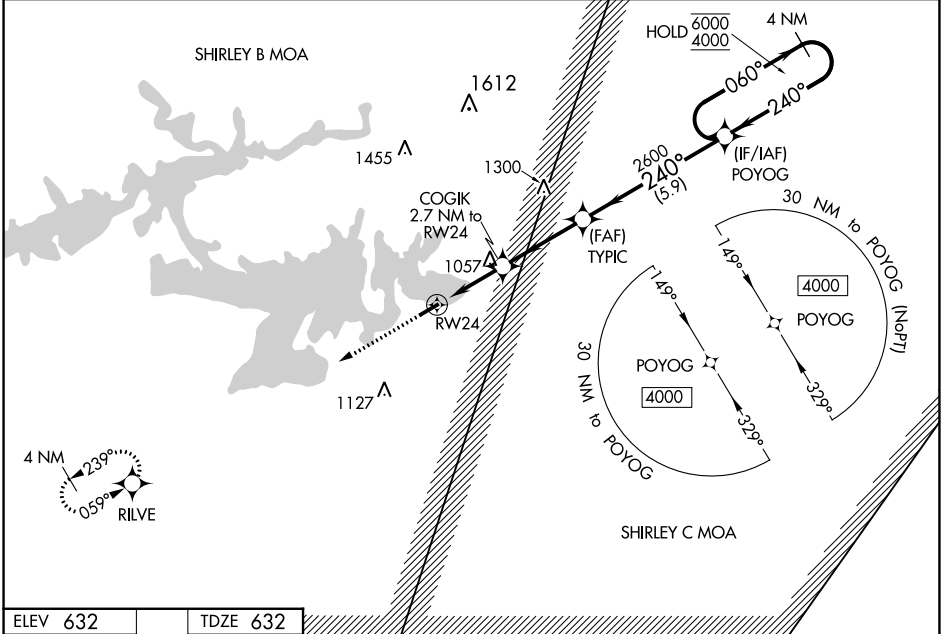
HEBER SPRINGS MUNI (HBZ)

RNP APCH.

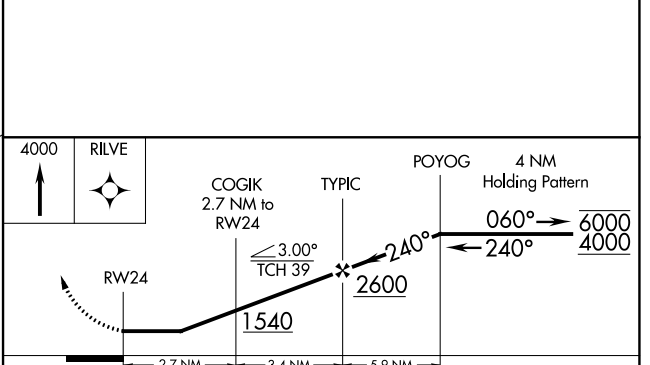
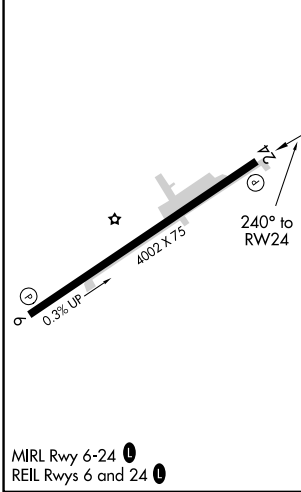
Procedure NA at night. Rwy 24 helicopter visibility reduction below 1 SM NA. Obtain local altimeter setting on CTAF; when not received, use Batesville altimeter setting and increase all MDAs 80 feet, and increase LNAV visibility Cat B ¼ SM, Cat C and D ½ SM. Increase Circling visibility Cat B, C ¼ SM, and Cat D ½ SM.

MISSED APPROACH: Climb to 4000 direct RILVE and hold, continue climb-in-hold to 4000.

MEMPHIS CENTER 126.85 281.55	UNICOM 122.7 (CTAF) 1
--	---------------------------------



ELEV 632	TDZE 632
----------	----------



CATEGORY	A	B	C	D
LNAV MDA	1320-1	688 (700-1)	1320-2	688 (700-2)
CIRCLING	1320-1 688 (700-1)	1380-1 748 (800-1)	1380-2¼ 748 (800-2¼)	1440-2½ 808 (900-2½)

SC-1, 16 MAY 2024 to 13 JUN 2024

SC-1, 16 MAY 2024 to 13 JUN 2024