

| | | |
|-------------|----------|-------------|
| APP CRS | Rwy Idg | 4002 |
| 060° | TDZE | 631 |
| | Apt Elev | 632 |

RNAV (GPS) RWY 6

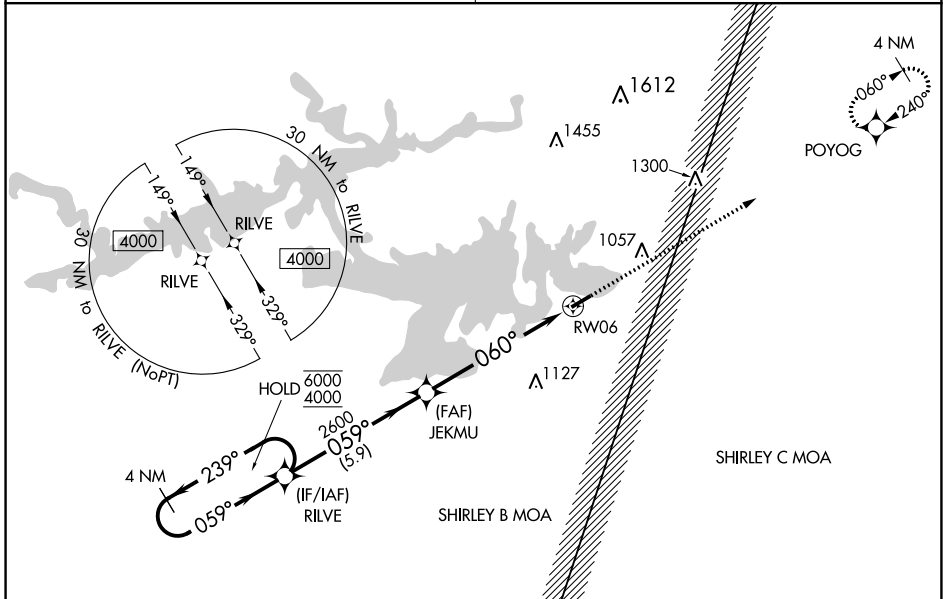
HEBER SPRINGS MUNI (HBZ)

RNP APCH.

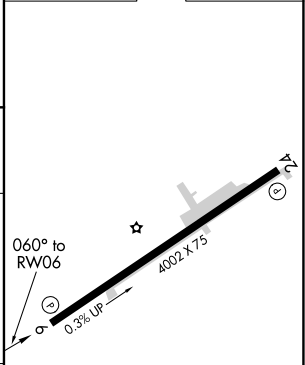
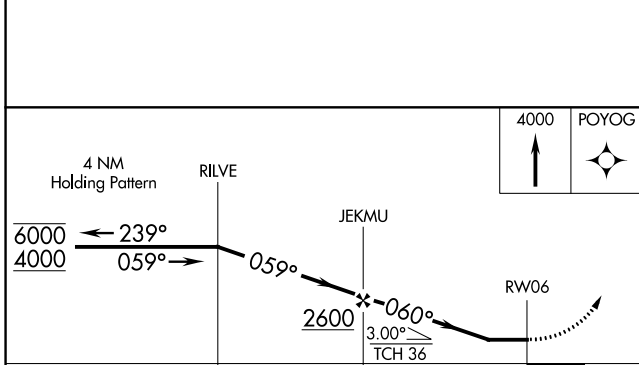
NA Procedure NA at night. Rwy 6 helicopter visibility reduction below 1 SM NA. Obtain local altimeter setting on CTAF; when not received, use Batesville altimeter setting and increase all MDAs 80 feet, and increase LNAV visibility Cat C and D 1/4 SM. Increase Circling visibility Cat C 1/4 SM, Cat D 1/2 SM.

MISSED APPROACH: Climb to 4000 direct POYOG and hold, continue climb-in hold 4000.

| | |
|--|-------------------------------|
| MEMPHIS CENTER 126.85 281.55 | UNICOM 122.7 (CTAF) |
|--|-------------------------------|



| | |
|----------|----------|
| ELEV 632 | TDZE 631 |
|----------|----------|



| CATEGORY | A | B | C | D |
|-------------------|-----------------------|-----------------------|--|--|
| LNAV MDA | 1240-1 | 609 (700-1) | 1240-1 ³ / ₄ | 609 (700-1 ³ / ₄) |
| C CIRCLING | 1240-1 608 (700-1) | 1380-1 748 (800-1) | 1380-2 ¹ / ₄ 748 (800-2 ¹ / ₄) | 1440-2 ¹ / ₂ 808 (900-2 ¹ / ₂) |

MIRL Rwy 6-24
REIL Rws 6 and 24

SC-1, 16 MAY 2024 to 13 JUN 2024

SC-1, 16 MAY 2024 to 13 JUN 2024