

RNAV (GPS) RWY 36

ALMYRA MUNI (M73)

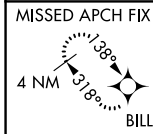
APP CRS	Rwy Idg	3494
358°	TDZE	210
	Apt Elev	210

RNP APCH.

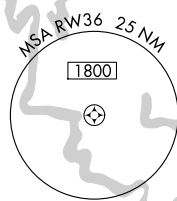
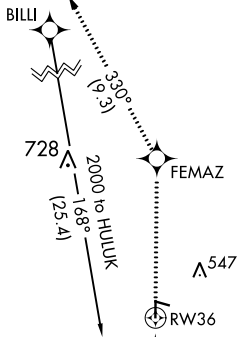
Use Stuttgart altimeter setting; if not received, use Pinebluff
 NA Rgnl/Girder Fld altimeter setting and increase all MDAs 40 feet.

MISSED APPROACH: Climb to 2000 direct FEMAZ and via 330° track to BILLI and hold.

SGT AWOS-3PT 119.025	LITTLE ROCK APP CON 119.85 353.6	CLNC DEL 119.85	UNICOM 123.0 (CTAF)
--------------------------------	--	---------------------------	-------------------------------

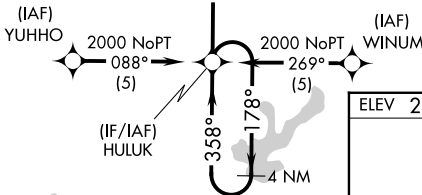
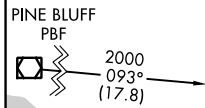


Procedure NA for arrival at BILLI via V69 northeast bound.

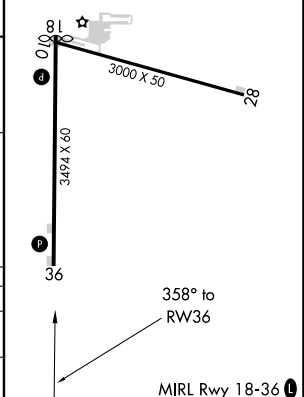
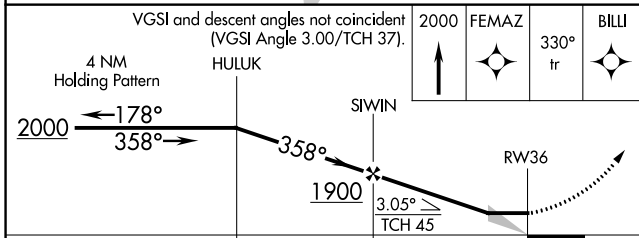


Procedure NA for arrival on UJM VOR/DME airway radials 193 CW 274.

Procedure NA for arrival on PBF VOR/DME airway radials 034 CW 128.



ELEV 210	TDZE 210
----------	----------



CATEGORY	A	B	C	D
LNVA MDA	680-1	470 (500-1)	680-1¼ 470 (500-1¼)	NA
CIRCLING	680-1 470 (500-1)	940-1 730 (800-1)	940-2 730 (800-2)	NA

SC-1, 16 MAY 2024 to 13 JUN 2024

SC-1, 16 MAY 2024 to 13 JUN 2024