

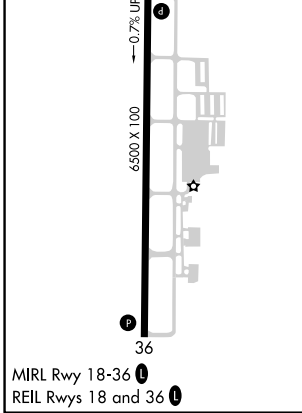
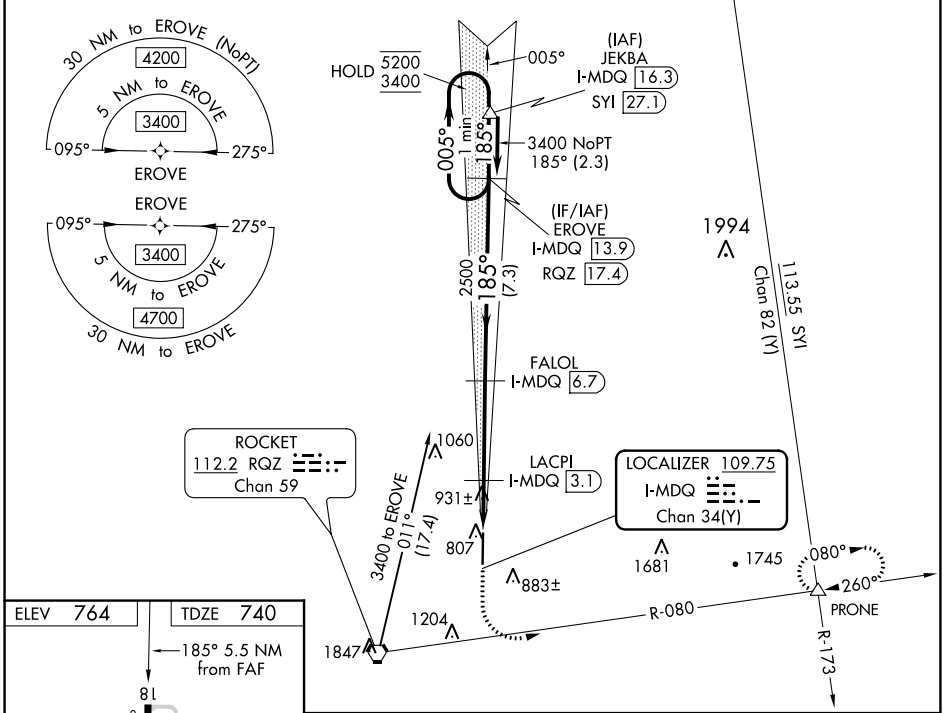
LOC/DME I-MDQ 109.75 Chan 34(Y)	APP CRS 185°	Rwy Idg TDZE 740 Apt Elev 764
--	------------------------	---

ILS or LOC RWY 18

HUNTSVILLE EXEC TOM SHARP JR FLD (MDQ)

DME or RNAV 1- GPS required.		MISSED APPROACH: Climb to 1200 then climbing left turn to 4000 on heading 120° and on RQZ VORTAC R-080 to PRONE INT and hold, continue climb-in-hold to 4000.	
Rwy 18 helicopter visibility reduction below 3/4 SM NA.			

AWOS-3PT 120.0	HUNTSVILLE APP CON * 125.6 354.1	GCO 121.725	UNICOM 123.0 (CTAF)
--------------------------	--	-----------------------	-------------------------------



1200	4000	RQZ R-080	PRONE	EROVE I-MDQ 13.9	One Minute Holding Pattern
↑	hdg 120°		△		
*LOC only.		*I-MDQ 2.6	LACPI I-MDQ 3.1	2500	005° → 5200
		I-MDQ 1.2		1360*	← 185° 3400
		1.4	0.5 NM	3.6 NM	2500
				7.3 NM	GS 3.00° TCH 43
CATEGORY	A	B	C	D	
S-ILS 18	940-3/4		200 (200-3/4)		
S-LOC 18	1200-1		460 (500-1)		
CIRCLING	1260-1	496 (500-1)	1560-2 1/4 796 (800-2 1/4)	2000-3 1236 (1300-3)	

SE-4, 16 MAY 2024 to 13 JUN 2024

SE-4, 16 MAY 2024 to 13 JUN 2024