

HUNTSVILLE, ALABAMA

AL-5924 (FAA)

22195

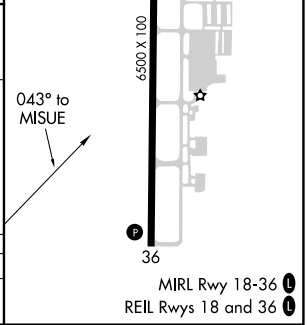
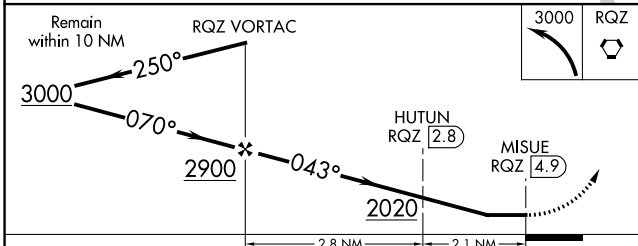
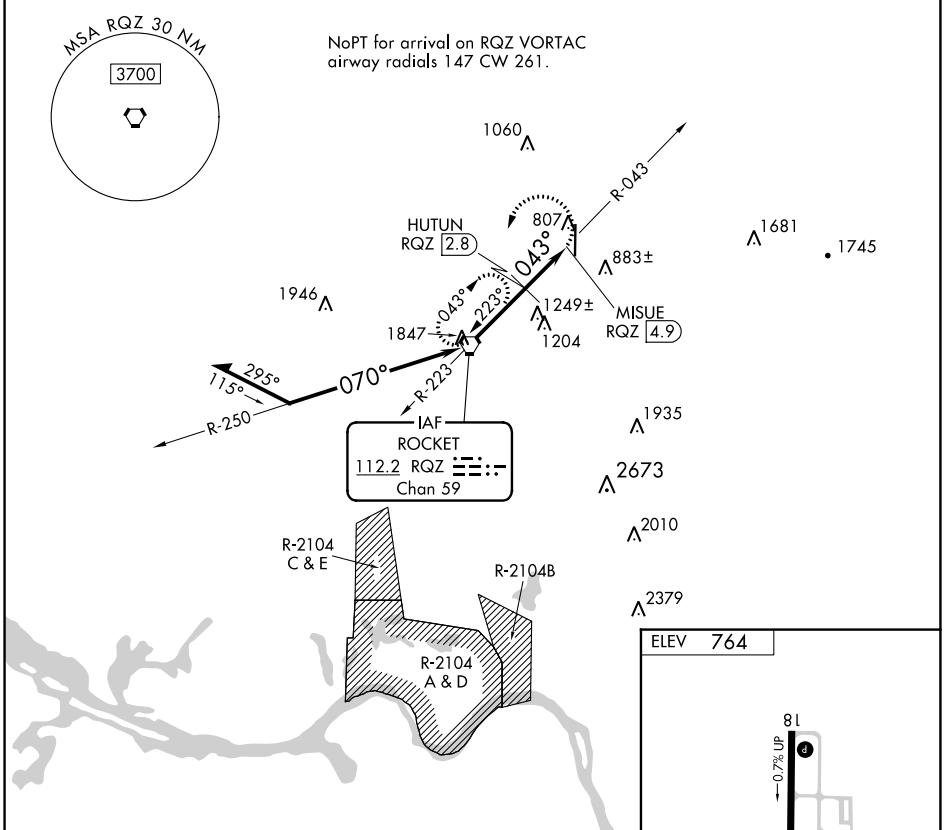
VORTAC RQZ <b>112.2</b> Chan 59	APP CRS <b>043°</b>	Rwy Idg TDZE Apt Elev	<b>N/A</b> <b>N/A</b> <b>764</b>
---------------------------------------	------------------------	-----------------------------	--

VOR-B

HUNTSVILLE EXEC TOM SHARP JR FLD (MDQ)

DME required.		MISSED APPROACH: Climbing left turn to 3000 direct RQZ VORTAC and hold.	
---------------	--	---	--

AWOS-3PT <b>120.0</b>	HUNTSVILLE APP CON* <b>125.6 354.1</b>	GCO <b>121.725</b>	UNICOM <b>123.0 (CTAF) 0</b>
--------------------------	---	-----------------------	---------------------------------



CATEGORY	A	B	C	D
<b>C</b> CIRCLING	1500-1	736 (800-1)	1560-2¼ 796 (800-2¼)	2000-3 1236 (1300-3)

HUNTSVILLE, ALABAMA  
Amdt 7B 28FEB19

HUNTSVILLE EXEC TOM SHARP JR FLD (MDQ)  
34°52'N-86°33'W

VOR-B

SE-4, 16 MAY 2024 to 13 JUN 2024

SE-4, 16 MAY 2024 to 13 JUN 2024