

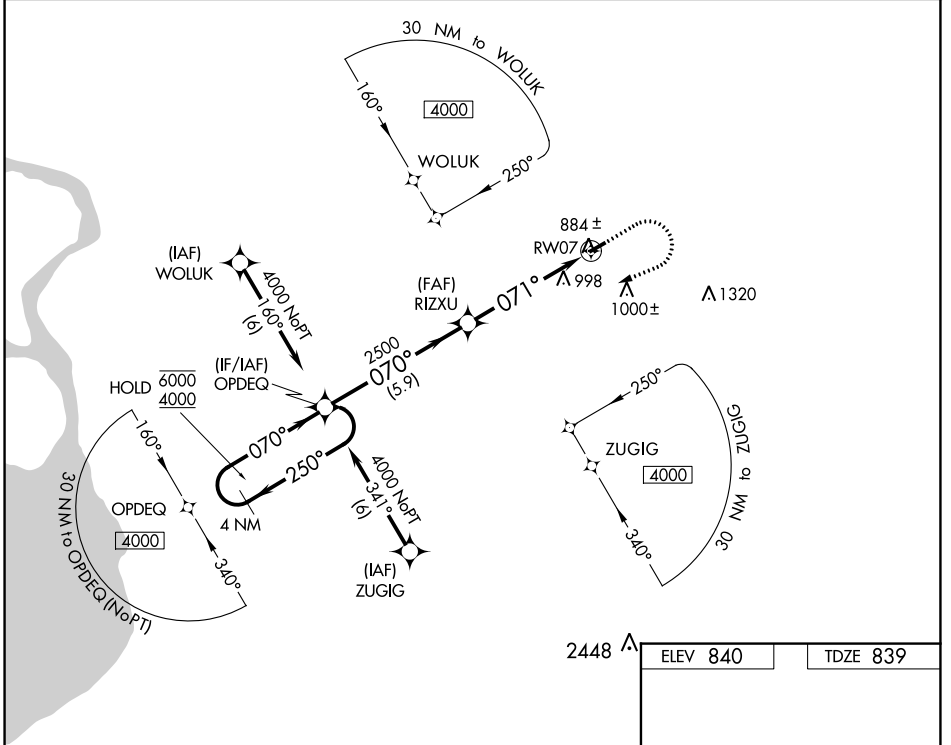
WAAS CH <b>93633</b> <b>W07A</b>	APP CRS <b>071°</b>	Rwy Idg TDZE Apt Elev	<b>3268</b> <b>839</b> <b>840</b>
--	------------------------	-----------------------------	---

# RNAV (GPS) RWY 7

AKRON/JESSON FLD (9G3)

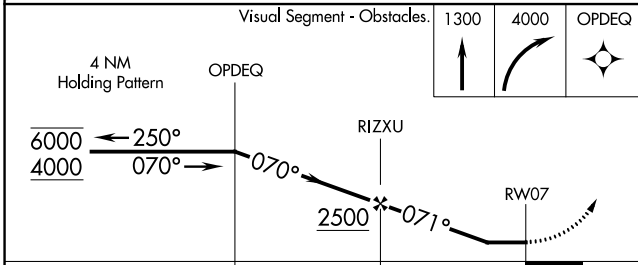
RNP APCH.	MISSED APPROACH: Climb to 1300 then climbing right turn to 4000 direct OPDEQ and hold, continue climb-in-hold to 4000.
▼ Procedure NA at night. Use Buffalo altimeter setting.	
▲ NA Rwy 7 helicopter visibility reduction below 1 SM NA.	

BUF ASOS <b>135.35</b>	BUFFALO APP CON <b>126.15 263.125</b>	UNICOM <b>122.725 (CTAF) 0</b>
---------------------------	--	-----------------------------------



NE-2, 16 MAY 2024 to 13 JUN 2024

NE-2, 16 MAY 2024 to 13 JUN 2024



CATEGORY	A	B	C	D
LP MDA	1180-1	341 (400-1)		NA
LNAV MDA	1300-1	461 (500-1)		NA
CIRCLING	1380-1	540 (600-1)		NA

2448 ▲

ELEV 840	TDZE 839
----------	----------

MIRL Rwy 7-25 0  
REIL Rwy 25 0