

APP CRS 237°	Rwy Idg 4100
	TDZE 835
	Apt Elev 835

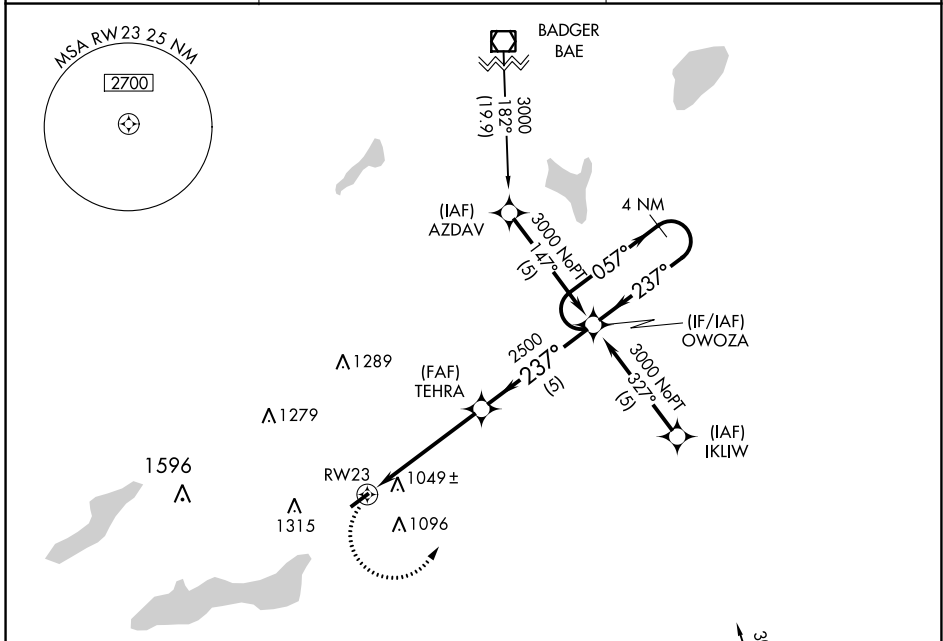
RNAV (GPS) RWY 23

GRAND GENEVA RESORT (C02)

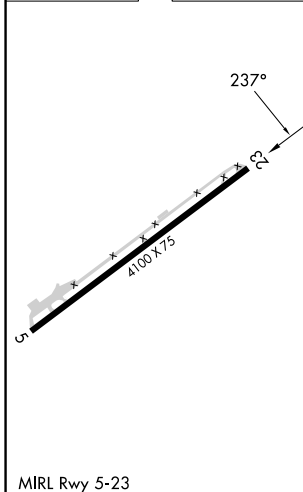
⚠ NA DME/DME RNP-0.3 NA. Procedure NA at night. Rwy 23 helicopter visibility reduction below 1 SM NA. Use Kenosha altimeter setting.

MISSED APPROACH: Climbing left turn to 3000 direct OWOZA and hold.

ENW ASOS 127.175	MILWAUKEE APP CON 135.875	UNICOM 122.8 (CTAF)
----------------------------	-------------------------------------	-------------------------------



ELEV 835	TDZE 835
----------	----------



3000	OWOZA	Visual Segment - Obstacles.	4 NM	
			Holding Pattern	
	TEHRA	2500	057°	
	RW23	237°	3000	
		← 237°		
		5.1 NM	5 NM	
CATEGORY	A	B	C	D
LNAV MDA	1360-1	525 (600-1)	1360-1½ 525 (600-1½)	NA
CIRCLING	1500-1 665 (700-1)	1520-1 685 (700-1)	1740-2¾ 905 (1000-2¾)	NA

EC-3, 16 MAY 2024 to 13 JUN 2024

EC-3, 16 MAY 2024 to 13 JUN 2024