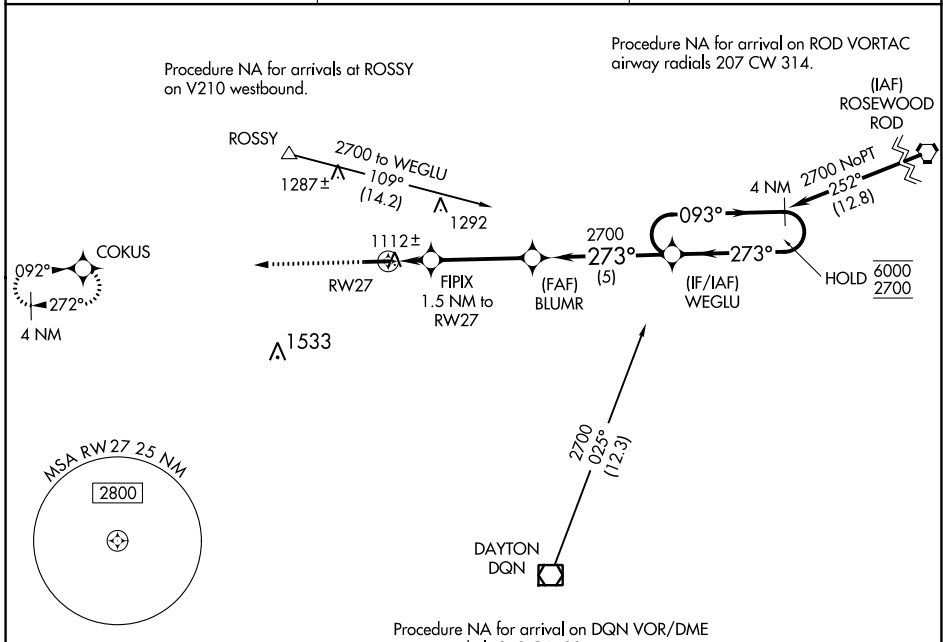


WAAS CH 86243 W27A	APP CRS 273°	Rwy Idg TDZE Apt Elev	4802 1007 1007
---------------------------------	------------------------	-----------------------------	---

RNAV (GPS) RWY 27

DARKE COUNTY (VES)

RNP APCH. ▼ Rwy 27 helicopter visibility reduction below 1 SM NA. Straight-in Rwy 27 NA at night, Circling Rwy 27 NA at night.	MISSED APPROACH: Climb to 2700 direct COKUS and hold.	
AWOS-3T 125.9	COLUMBUS APP CON 134.45 352.05	UNICOM 122.8 (CTAF)



ELEV 1007	TDZE 1007
-----------	-----------

	2700	COKUS	BLUMR	WEGLU	4 NM Holding Pattern																				
	1540	1.5 NM to RWY 27	3.6 NM	5 NM																					
<table border="1"> <thead> <tr> <th>CATEGORY</th> <th>A</th> <th>B</th> <th>C</th> <th>D</th> </tr> </thead> <tbody> <tr> <td>LP MDA</td> <td></td> <td>1380-1</td> <td>373 (400-1)</td> <td>NA</td> </tr> <tr> <td>LNAV MDA</td> <td></td> <td>1380-1</td> <td>373 (400-1)</td> <td>NA</td> </tr> <tr> <td> CIRCLING</td> <td>1440-1 433 (500-1)</td> <td>1480-1 473 (500-1)</td> <td>1660-1¾ 653 (700-1¾)</td> <td>NA</td> </tr> </tbody> </table>	CATEGORY	A	B	C	D	LP MDA		1380-1	373 (400-1)	NA	LNAV MDA		1380-1	373 (400-1)	NA	CIRCLING	1440-1 433 (500-1)	1480-1 473 (500-1)	1660-1¾ 653 (700-1¾)	NA					
CATEGORY	A	B	C	D																					
LP MDA		1380-1	373 (400-1)	NA																					
LNAV MDA		1380-1	373 (400-1)	NA																					
CIRCLING	1440-1 433 (500-1)	1480-1 473 (500-1)	1660-1¾ 653 (700-1¾)	NA																					

EC-2, 16 MAY 2024 to 13 JUN 2024

EC-2, 16 MAY 2024 to 13 JUN 2024