

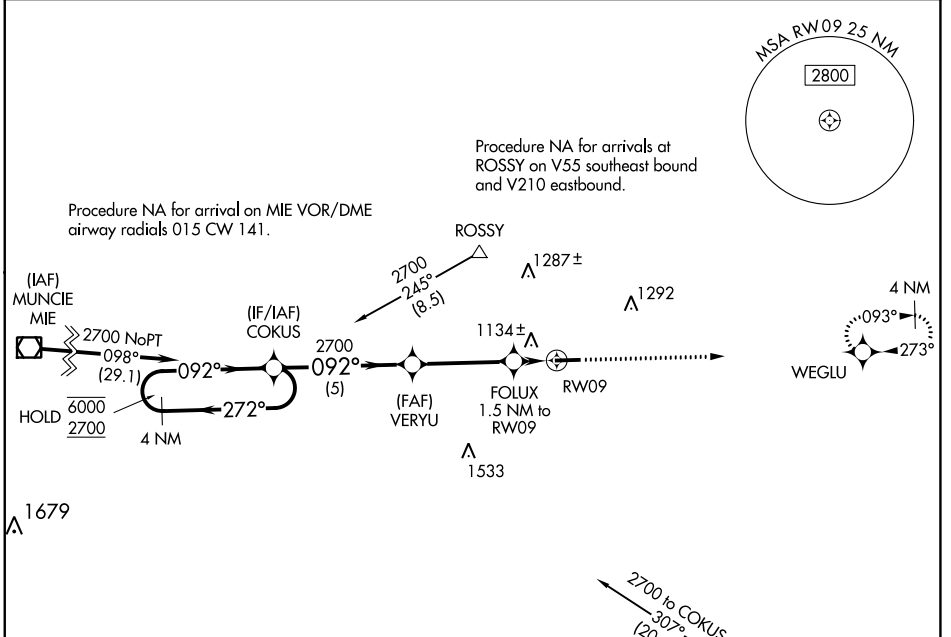
WAAS CH <b>77642</b> <b>W09A</b>	APP CRS <b>092°</b>	Rwy Idg TDZE <b>1007</b> Apt Elev <b>1007</b>	<b>4802</b>
--	------------------------	---	-------------

# RNAV (GPS) RWY 9

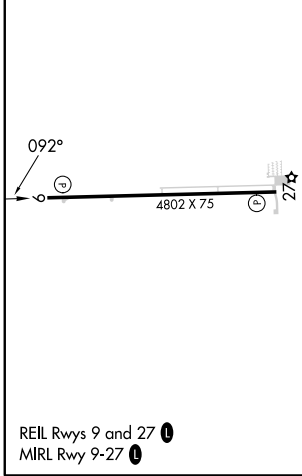
DARKE COUNTY (VES)

RNP APCH - GPS.	<p>⚠ Circling Rwy 27 NA at night. Rwy 9 helicopter visibility reduction below <math>\frac{3}{4}</math> SM NA. For uncompensated Baro-VNAV systems, LNAV/VNAV NA below <math>-16^{\circ}</math> C or above <math>54^{\circ}</math> C.</p>	MISSED APPROACH: Climb to 2700 direct WEGLU and hold.
-----------------	--	---

AWOS-3T <b>125.9</b>	COLUMBUS APP CON <b>134.45 352.05</b>	UNICOM <b>122.8 (CTAF) 0</b>
-------------------------	--	---------------------------------



ELEV 1007	TDZE 1007
-----------	-----------



Procedure NA for arrival on DQN VOR/DME airway radials 234 CW 008.

DAYTON DQN

4 NM Holding Pattern

VGSI and RNAV glidepath not coincident (VGSI Angle 3.00/TCH 38).

2700 WEGLU

COKUS

VERYU

2700

FOLUX 1.5 NM to RW09

RW09

\*LNAV only.

\*1540

5 NM

3.6 NM

1.5 NM

CATEGORY	A	B	C	D
LPV DA	1257-1 250 (300-1)			NA
LNAV/VNAV DA	1400-1 $\frac{1}{8}$ 393 (400-1 $\frac{1}{8}$ )			NA
LNAV MDA	1400-1	393 (400-1)	1400-1 $\frac{1}{8}$ 393 (400-1 $\frac{1}{8}$ )	NA
<b>C</b> CIRCLING	1440-1 433 (500-1)	1480-1 473 (500-1)	1660-1 $\frac{3}{4}$ 653 (700-1 $\frac{3}{4}$ )	NA

EC-2, 16 MAY 2024 to 13 JUN 2024

EC-2, 16 MAY 2024 to 13 JUN 2024