

|  |                        |   |             |
|--|------------------------|---|-------------|
| WAAS<br>CH <b>72709</b><br><b>W27A</b> | APP CRS<br><b>272°</b> | Rwy Idg<br>TDZE <b>912</b><br>Apt Elev <b>913</b> | <b>4201</b> |
|--|------------------------|---|-------------|

# RNAV (GPS) RWY 27

DE KALB TAYLOR MUNI (DKB)

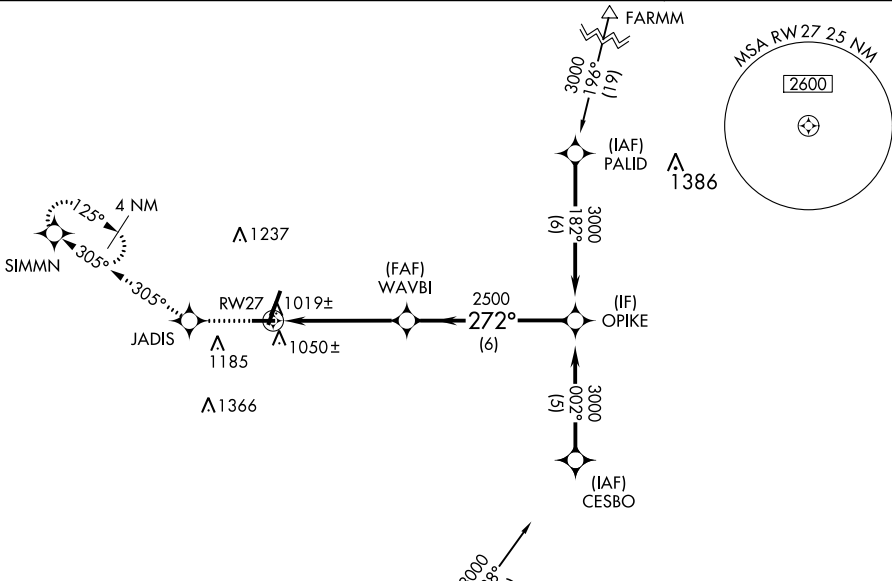
**⚠** When local altimeter setting not received, use Aurora altimeter setting and increase all DA 61 feet and all MDA 80 feet; increase all LPV and LNAV/VNAV visibilities, LNAV Cats C/D visibility, and Circling Cats C/D visibility ¼ mile. Baro-VNAV NA when using Aurora altimeter setting. VDP NA when using Aurora altimeter setting. For uncompensated Baro-VNAV systems, LNAV/VNAV NA below -16° C (4°F) or above 47° C (116° F). DME/DME RNP-0.3 NA.

**MISSED APPROACH:** Climb to 3000 direct JADIS and via 305° track to SIMMN and hold.

AWOS-3  
**119.075**

CHICAGO APP CON  
**133.5 349.0**

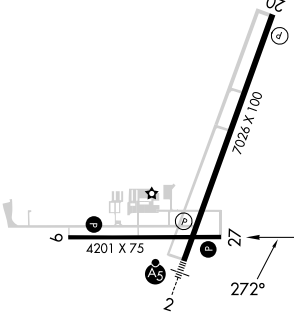
UNICOM  
**122.7 (CTAF) 0**



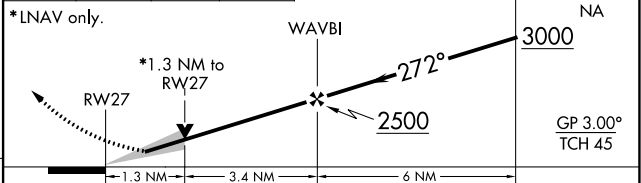
EC-3, 16 MAY 2024 to 13 JUN 2024

EC-3, 16 MAY 2024 to 13 JUN 2024

|                 |                 |
|-----------------|-----------------|
| ELEV <b>913</b> | TDZE <b>912</b> |
|-----------------|-----------------|



|      |       |         |       |  |
|------|-------|---------|-------|--|
| 3000 | JADIS | 305° tr | SIMMN | VGSI and RNAV glidepath not coincident (VGSI Angle 3.00/TCH 24). |
|------|-------|---------|-------|--|



| CATEGORY     | A                     | B                     | C                       | D                       |
|--------------|-----------------------|-----------------------|-------------------------|-------------------------|
| LPV DA       | 1162-¾                |                       | 250 (300-¾)             |                         |
| LNAV/VNAV DA | 1317-1½               |                       | 405 (500-1½)            |                         |
| LNAV MDA     | 1360-1                | 448 (500-1)           | 1360-1¼<br>448 (500-1¼) | 1360-1½<br>448 (500-1½) |
| CIRCLING     | 1360-1<br>447 (500-1) | 1500-1<br>587 (600-1) | 1600-2<br>687 (700-2)   | 1740-2¾<br>827 (900-2¾) |

REIL Rwy 9, 20 and 27  
MIRL Rwy 2-20  
MIRL Rwy 9-27