

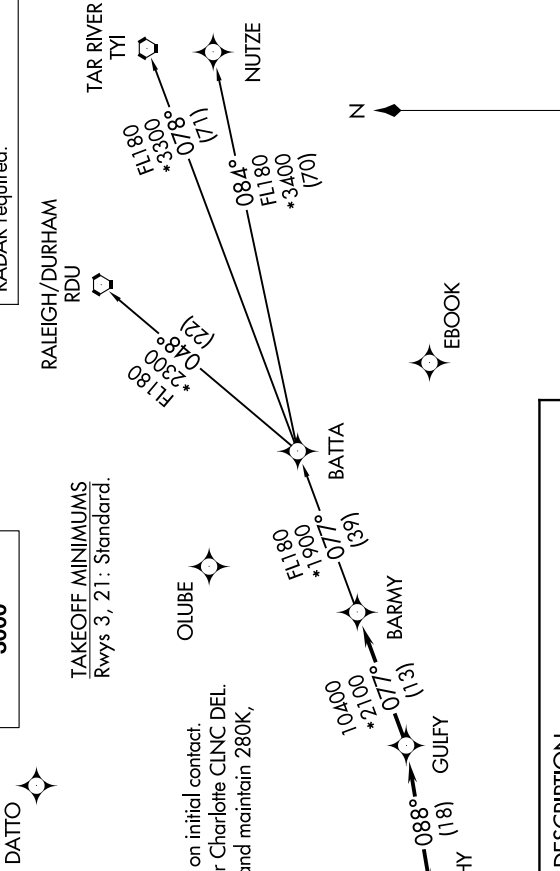
# BARMY FIVE DEPARTURE (RNAV)

SE-2, 16 MAY 2024 to 13 JUN 2024

CHARLOTTE DEP CON  
120.05 257.2  
ASOS  
135.725  
CLNC DEL  
127.2  
UNICOM  
123.0

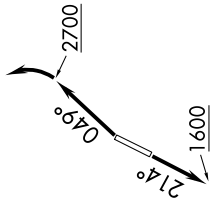
**TOP ALTITUDE:**  
3000

RNAV 1 - DME/DME/IRU or GPS.  
RADAR required.



TAKEOFF MINIMUMS  
Rwys 3, 21: Standard.

- NOTE: For turbo jets only.
- NOTE: If unable to accept climb rates, advise ATC on initial contact.
- NOTE: Transponder code will be issued via PDC or Charlotte CLNC DEL.
- NOTE: Upon reaching 10000 MSL, accelerate to and maintain 280K, if unable advise ATC.



## DEPARTURE ROUTE DESCRIPTION

**TAKEOFF RUNWAY 3:** Climb on heading 049° to 2700 before turning left, then on heading assigned by ATC, thence. . . .

**TAKEOFF RUNWAY 21:** Climb on heading 214° to 1600 before proceeding north, then on heading assigned by ATC, thence. . . .

. . . on RADAR vectors to MESHY, then on depicted route to BARMY. Then on assigned transition. Maintain 3000, expect clearance to filed altitude within 10 minutes after departure.

- NUTIZE TRANSITION (BARMY5.NUTIZE)
- RALEIGH/DURHAM TRANSITION (BARMY5.RDU)
- TAR RIVER TRANSITION (BARMY5.TYI)

SE-2, 16 MAY 2024 to 13 JUN 2024

NOTE: Chart not to scale.