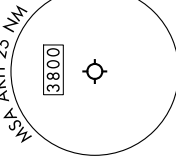


# KILNS FIVE DEPARTURE (RNAV)

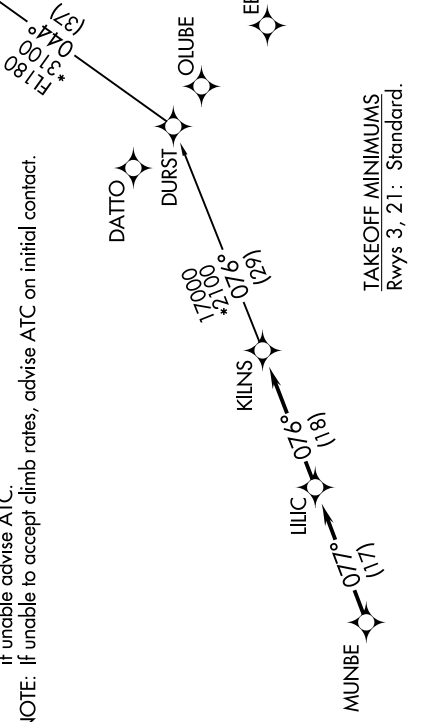
SE-2, 16 MAY 2024 to 13 JUN 2024

CHARLOTTE DEP CON  
120.05 257.2  
ASOS  
135.725  
CLNC DEL  
127.2  
UNICOM (CTAF)  
123.0



**TOP ALTITUDE:**  
**3000**

NOTE: For turbopets only.  
 NOTE: Transponder code will be issued via PDC or Charlotte CLNC DEL.  
 NOTE: Upon reaching 10000 MSL, accelerate to and maintain 280K, if unable advise ATC.  
 NOTE: If unable to accept climb rates, advise ATC on initial contact.



TAKEOFF MINIMUMS  
Rwys 3, 21: Standard.

NOTE: Chart not to scale.

## DEPARTURE ROUTE DESCRIPTION

**TAKEOFF RUNWAY 3:** Climb on heading 049° to 2700 before turning left, then on heading assigned by ATC, thence . . . . .

**TAKEOFF RUNWAY 21:** Climb on heading 214° to 1600 before proceeding north, then on heading assigned by ATC, thence . . . . .

. . . . on RADAR vectors to MUNBE, then on depicted route to KILNS, then on AUDII Transition. Maintain 3000. Expect clearance to filed altitude within 10 minutes after departure.

AUDII TRANSITION (KILNS5.AUDII)

SE-2, 16 MAY 2024 to 13 JUN 2024

# KILNS FIVE DEPARTURE (RNAV)