

(LILLS3.LILLS) 24081

AL-6081 (FAA)

GASTONIA MUNI (AKH)  
GASTONIA, NORTH CAROLINA

# LILLS THREE DEPARTURE (RNAV)

RNAV 1 - DME/DME/IRU or GPS.

RADAR required.

**TOP ALTITUDE:**

**3000**

CHARLOTTE DEP CON

120.05 257.2

ASOS

135.725

CLNC DEL

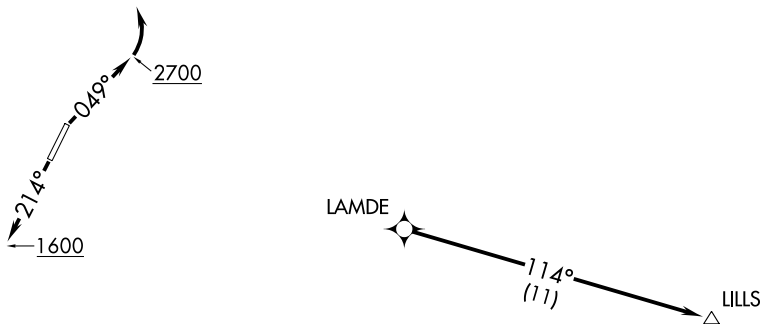
127.2

UNICOM (CTAF)

123.0

## TAKEOFF MINIMUMS

Rwys 3, 21: Standard.

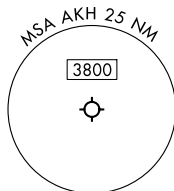


NOTE: For turbo jets only.

NOTE: Transponder code will be issued via PDC or Charlotte CLNC DEL.

NOTE: If unable to accept climb rates, advise ATC on initial contact.

NOTE: Upon reaching 10000 MSL, accelerate to and maintain 280K, if unable advise ATC.



NOTE: Chart not to scale.



## DEPARTURE ROUTE DESCRIPTION

TAKEOFF RUNWAY 3: Climb on heading 049° to 2700 before turning left, then on heading assigned by ATC, thence. . . .

TAKEOFF RUNWAY 21: Climb on heading 214° to 1600 before proceeding north, then on heading assigned by ATC, thence. . . .

. . . . on RADAR vectors to LAMDE, then on depicted route to LILLS. Maintain 3000. Expect clearance to filed altitude within 10 minutes after departure.

# LILLS THREE DEPARTURE (RNAV)

(LILLS3.LILLS) 21MAR24

GASTONIA, NORTH CAROLINA  
GASTONIA MUNI (AKH)

SE-2, 16 MAY 2024 to 13 JUN 2024

SE-2, 16 MAY 2024 to 13 JUN 2024