

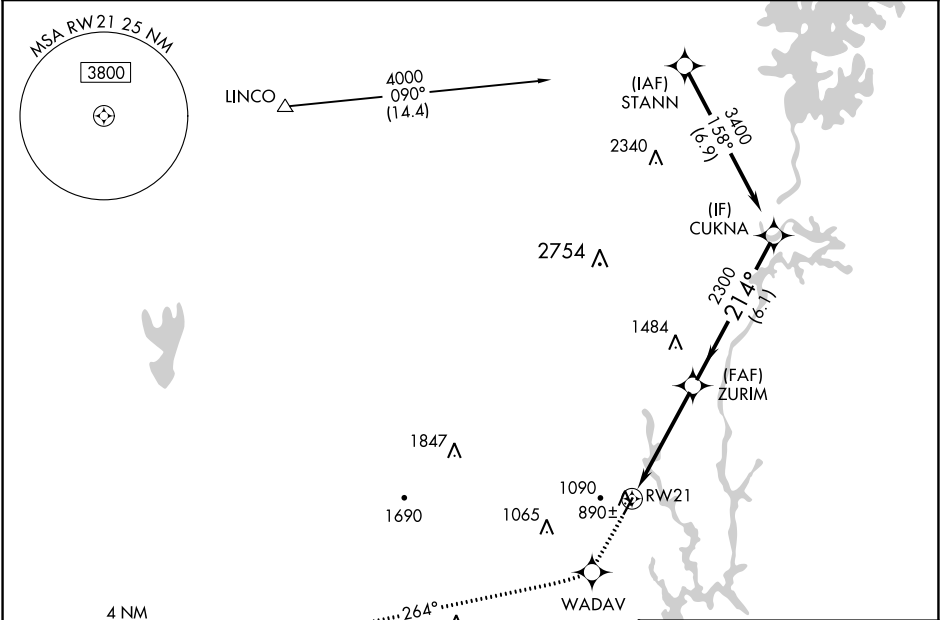
WAAS CH 50402 W21A	APP CRS 214°	Rwy Idg TDZE Apt Elev	3688 798 798
--	------------------------	-----------------------------	---

RNAV (GPS) RWY 21

GASTONIA MUNI (AKH)

RNP APCH.		MISSED APPROACH: Climb to 3200 direct WADAV and via 264° track to GAFFE and hold.	
<p>▽ If local altimeter setting not received, use Charlotte/Douglas Intl altimeter setting and increase all DA/MDAs 40 feet. Rwy 21 helicopter visibility reduction below ¾ SM NA.</p>			

ASOS 135.725	CHARLOTTE APP CON 120.05 257.2	CLNC DEL 127.2	UNICOM 123.0 (CTAF) 0
------------------------	--	--------------------------	---------------------------------

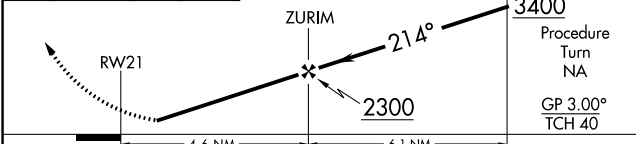


SE-2, 16 MAY 2024 to 13 JUN 2024

SE-2, 16 MAY 2024 to 13 JUN 2024

ELEV 798	TDZE 798
<p>214° to RWY 21</p>	

3200	WADAV	GAFFE	VGSI and RNAV glidepath not coincident (VGSI Angle 3.00/TCH 38).
	↑	tr 264°	



CATEGORY	A	B	C	D
LPV DA	1111-1¼	313 (400-1¼)		NA
LNAV MDA	1420-1	622 (700-1)	1420-1¾ 622 (700-1¾)	NA

