

APP CRS 144°	Rwy Idg 3305
	TDZE 1288
	Apt Elev 1288

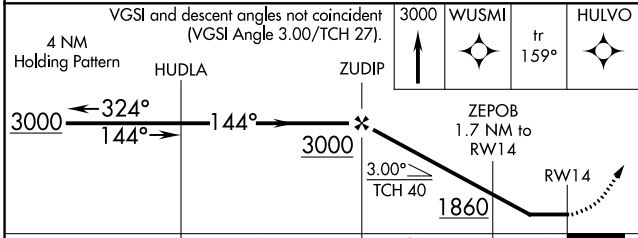
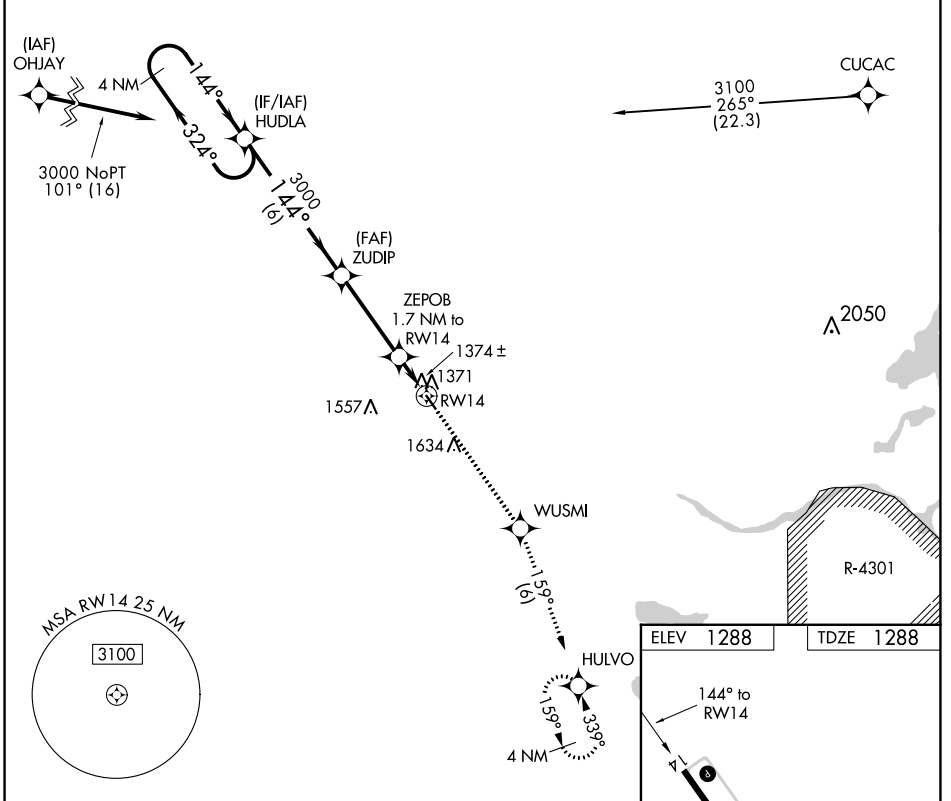
RNAV (GPS) RWY 14

STAPLES MUNI (SAZ)

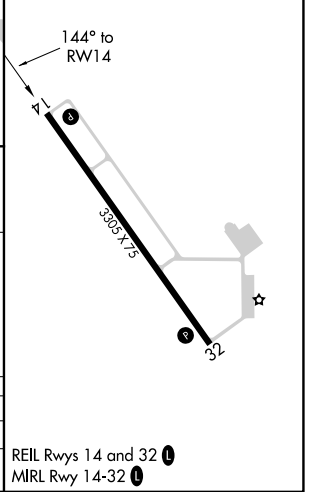
⚠ Rwy 14 Straight-in and Circling minimums NA at night. Rwy 14 helicopter visibility reduction below 1 SM NA. DME/DME RNP-0.3 NA. When local altimeter setting not received, use Pine River altimeter setting and increase all MDA 80 feet and all Cat C visibilities ½ SM.

⚠ MISSED APPROACH: Climb to 3000 direct WUSMI and on track 159° to HULVO and hold.

AWOS-3 118.325	MINNEAPOLIS CENTER 118.05 239.0	GCO 121.725	CTAF 122.9 Ⓛ
--------------------------	---	-----------------------	-------------------------------



ELEV 1288	TDZE 1288
-----------	-----------



CATEGORY	A	B	C	D
LNAV MDA	1640-1 352 (400-1)			NA
Ⓛ CIRCLING	1780-1 492 (500-1)	1940-1 652 (700-1)	1940-1¼ 652 (700-1¼)	NA

REIL Rwy 14 and 32 **Ⓛ**
MIRL Rwy 14-32 **Ⓛ**

NC-1, 16 MAY 2024 to 13 JUN 2024

NC-1, 16 MAY 2024 to 13 JUN 2024