

WAAS CH 97528 W32A	APP CRS 324°	Rwy Idg TDZE Apt Elev	3305 1287 1288
--	------------------------	-----------------------------	---

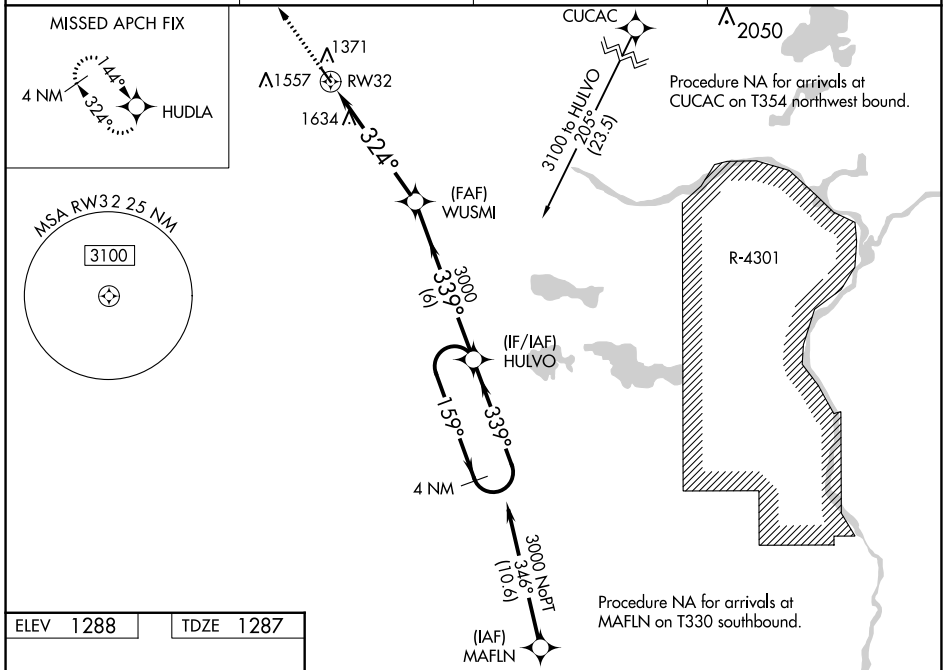
RNAV (GPS) RWY 32

STAPLES MUNI (SAZ)

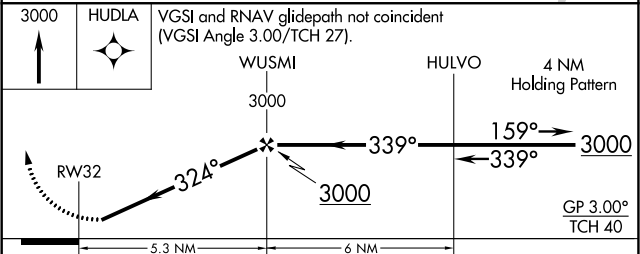
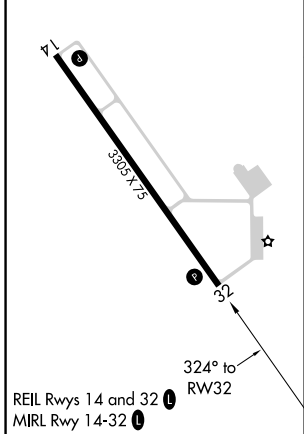
⚠ Circling to Rwy 14 NA at night. Baro-VNAV NA when using Pine River altimeter setting.
⚠ For uncompensated Baro-VNAV systems, LNAV/VNAV NA below -17°C (2°F) or above 54°C (130°F).
 DME/DME RNP-0.3 NA. When local altimeter setting not received, use Pine River altimeter setting and increase all DA 64 feet and all MDA 80 feet and increase LPV all Cats, LNAV/VNAV all Cats, LNAV Cat C and Circling Cat C visibility ¼ SM. Rwy 32 helicopter visibility reduction below ¾ SM NA.

MISSED APPROACH:
Climb to 3000 direct HUDLA and hold.

AWOS-3 118.325	MINNEAPOLIS CENTER 118.05 239.0	GCO 121.725	CTAF 122.9
--------------------------	---	-----------------------	----------------------



ELEV 1288	TDZE 1287
-----------	-----------



CATEGORY	A	B	C	D
LPV DA	1592-1 305 (400-1)			NA
LNAV/VNAV DA	1965-2½ 678 (700-2½)			NA
LNAV MDA	1900-1	613 (700-1)	1900-1¾ 613 (700-1¾)	NA
C CIRCLING	1900-1 612 (700-1)	1940-1 652 (700-1)	1940-1¾ 652 (700-1¾)	NA

NC-1, 16 MAY 2024 to 13 JUN 2024

NC-1, 16 MAY 2024 to 13 JUN 2024