

APP CRS	Rwy Idg	3501
188°	TDZE	1204
	Apt Elev	1207

RNAV (GPS) RWY 19

ASHLAND COUNTY (3G4)

RNP APCH.

- Rwy 19 helicopter visibility reduction below 1 SM NA. Procedure NA at night. Use Mansfield altimeter setting, when not received use Wooster altimeter setting.
- NA

MISSED APPROACH: Climb to 3000 direct HINPO and left turn on track 098° to READS and hold.

MFD ASOS

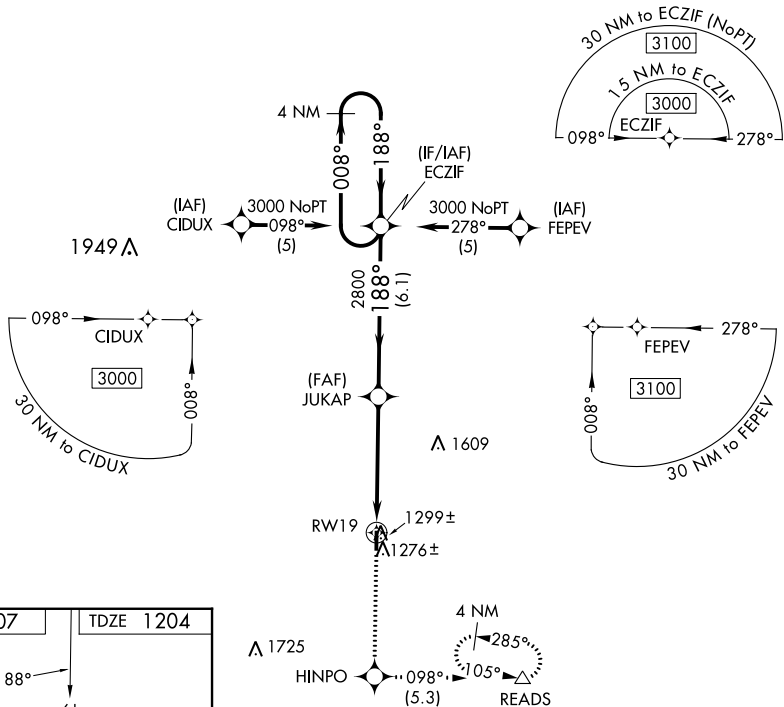
125.3

CLEVELAND APP CON *

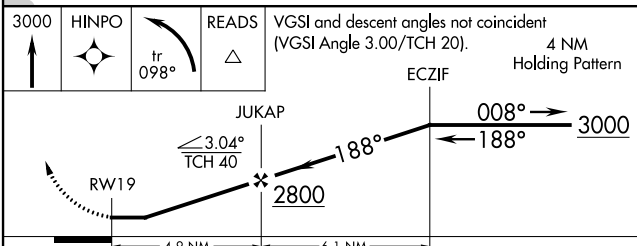
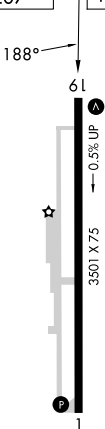
124.2 360.65

UNICOM

122.7 (CTAF)



ELEV 1207	TDZE 1204
-----------	-----------



CATEGORY	A	B	C	D
LNAV MDA	1600-1	396 (400-1)	1600-1 $\frac{1}{8}$ 396 (400-1 $\frac{1}{8}$)	NA
CIRCLING	1660-1	453 (500-1)	1740-1 $\frac{1}{2}$ 533 (600-1 $\frac{1}{2}$)	NA

EC-2, 16 MAY 2024 to 13 JUN 2024

EC-2, 16 MAY 2024 to 13 JUN 2024