

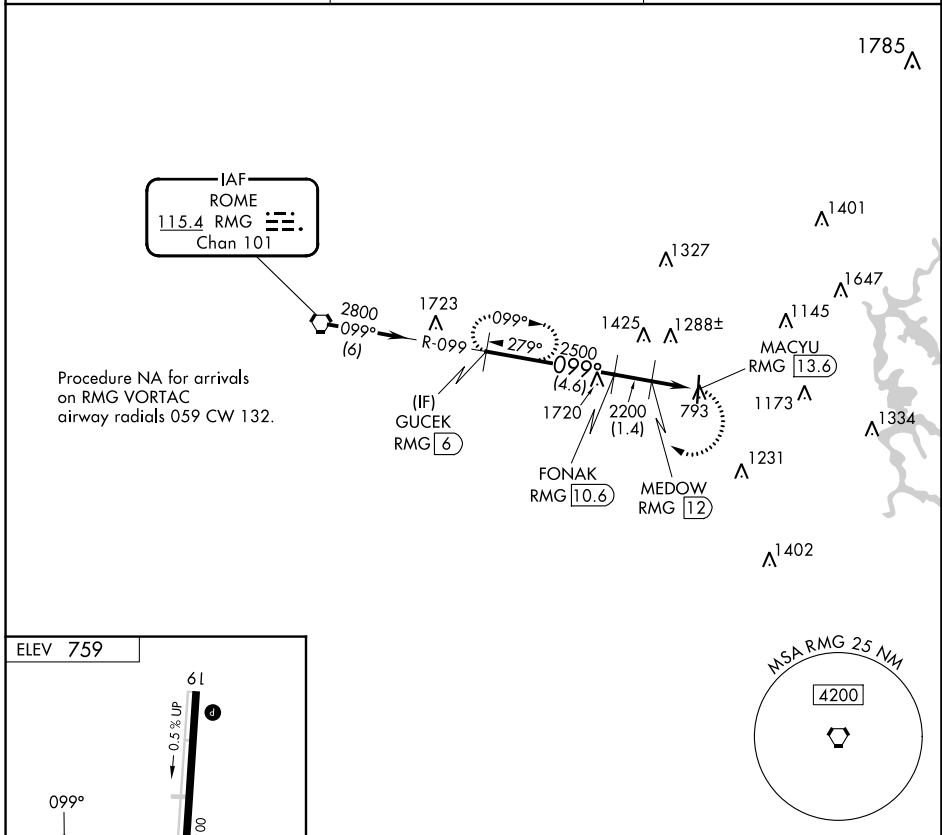
VORTAC RMG <b>115.4</b> Chan <b>101</b>	APP CRS <b>099°</b>	Rwy Idg TDZE Apt Elev <b>N/A</b> <b>N/A</b> <b>759</b>
---	------------------------	---

**VOR-A**  
CARTERSVILLE (VPC)

**⚠** When local altimeter setting not received, use Rome altimeter setting and increase all MDA 80 feet; increase Cat A visibility ¼ SM. DME required.

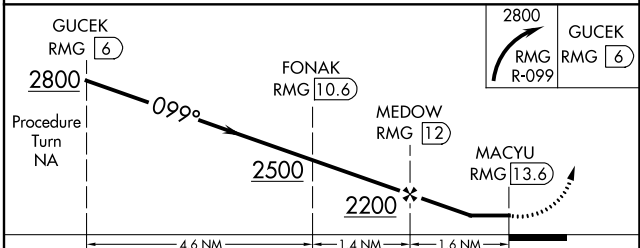
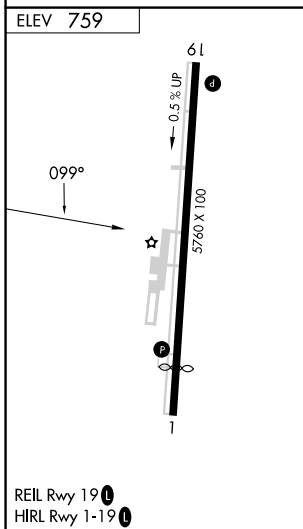
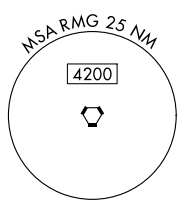
MISSED APPROACH: Climbing right turn to 2800 on RMG R-099 to GUCEK/6 DME and hold.

AWOS-3PT <b>120.525</b>	ATLANTA APP CON <b>121.0 268.7</b>	UNICOM <b>122.7 (CTAF) 0</b>
----------------------------	---------------------------------------	---------------------------------



Procedure NA for arrivals on RMG VORTAC airway radials 059 CW 132.

IAF  
ROME  
115.4 RMG  
Chan 101



CATEGORY	A	B	C	D
CIRCLING	1560-1 801 (900-1)	1600-1¼ 841 (900-1¼)	1740-3 981 (1000-3)	2020-3 1261 (1300-3)

SE-4, 16 MAY 2024 to 13 JUN 2024

SE-4, 16 MAY 2024 to 13 JUN 2024