

GARLAND FIVE DEPARTURE

SC-2, 16 MAY 2024 to 13 JUN 2024

RADAR and DME required.

**TOP ALTITUDE:
ASSIGNED BY ATC**

REGIONAL DEP CON
118.1 306.95
CTAF
122.8

TAKEOFF MINIMUMS
Rwy 17: Standard.
Rwy 35: Standard with minimum climb of 320'/NM to 3500.

TEXARKANA
116.3 TKX
Chan 110

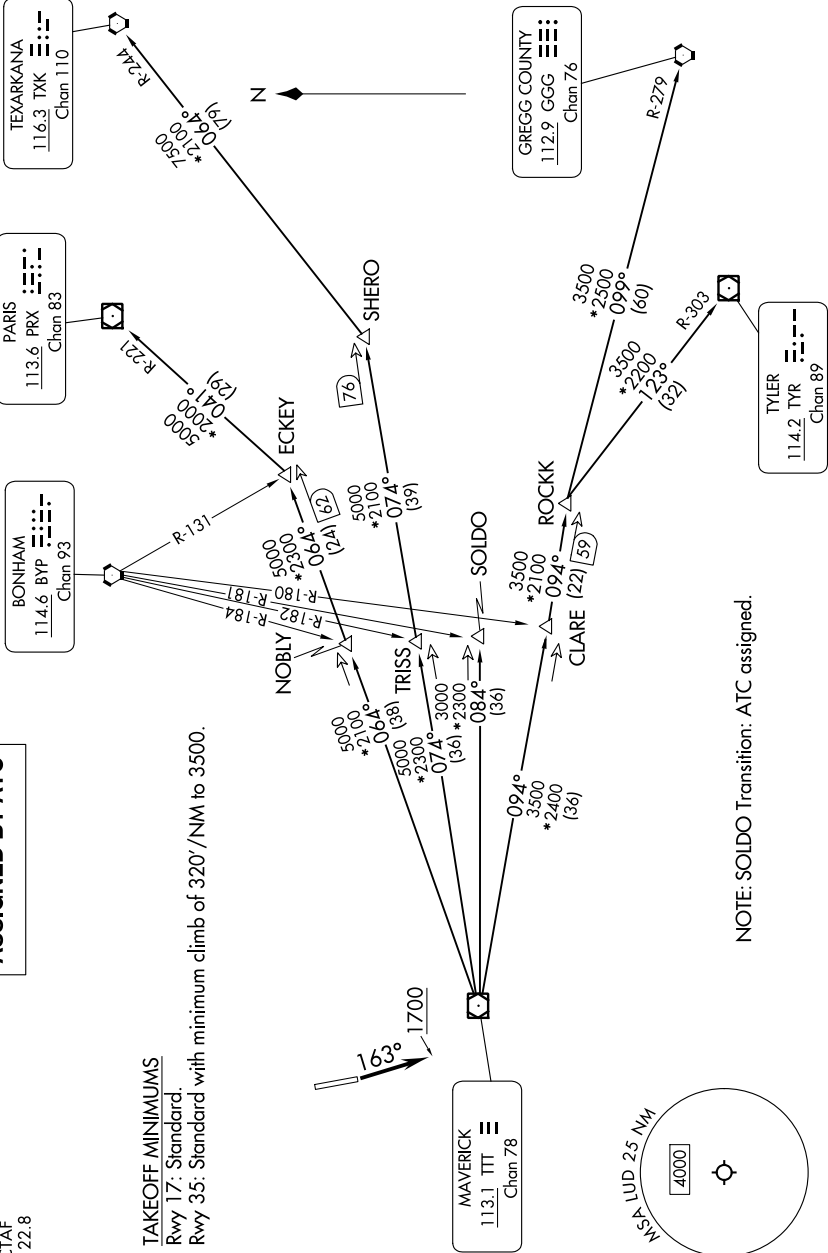
PARIS
113.6 PRX
Chan 83

BONHAM
114.6 BYP
Chan 93

MAVERICK
113.1 TTT
Chan 78

GREGG COUNTY
112.9 GGG
Chan 76

TYLER
114.2 TYR
Chan 89



(CONTINUED ON FOLLOWING PAGE)

SC-2, 16 MAY 2024 to 13 JUN 2024