

KUSSO ONE DEPARTURE (RNAV)

SC-2, 16 MAY 2024 to 13 JUN 2024

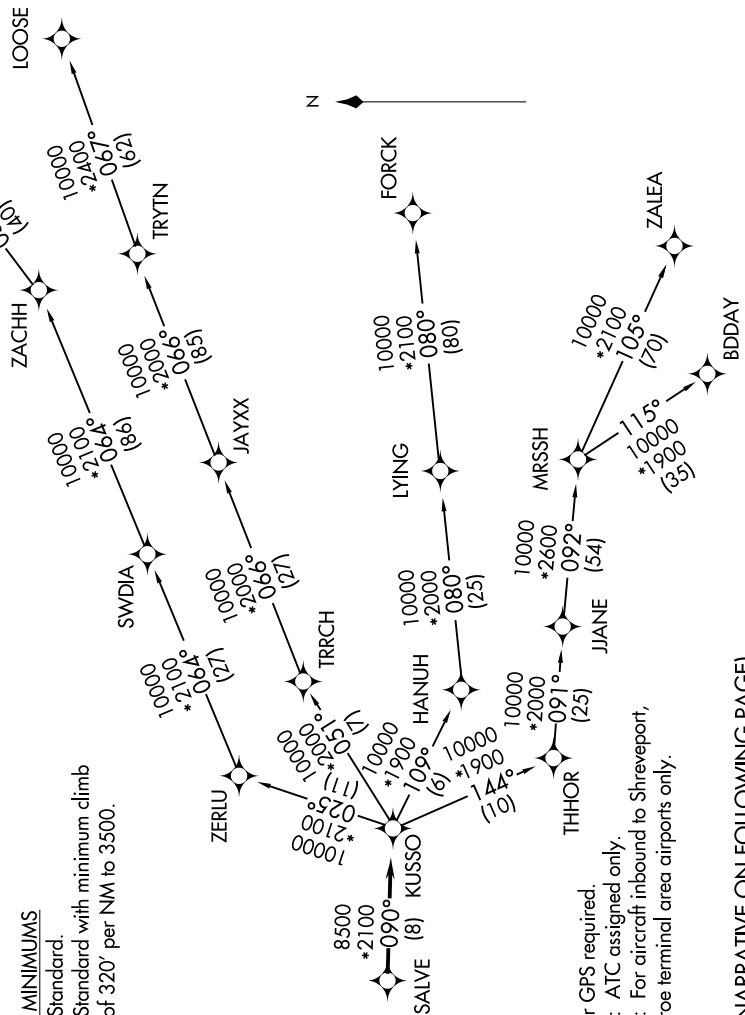
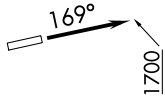
CTAF
122.8
REGIONAL DEP CON
118.1 306.95

**TOP ALTITUDE:
ASSIGNED BY ATC**

TAKEOFF MINIMUMS

Rwy 17: Standard.

Rwy 35: Standard with minimum climb of 320' per NM to 3500.



NOTE: RADAR required.
NOTE: RNAV 1.
NOTE: DME/DME/IRU or GPS required.
NOTE: BDDAY Transition: ATC assigned only.
NOTE: MRSSH Transition: For aircraft inbound to Shreveport, Jackson and Monroe terminal area airports only.

(NARRATIVE ON FOLLOWING PAGE)

NOTE: Chart not to scale.

SC-2, 16 MAY 2024 to 13 JUN 2024

KUSSO ONE DEPARTURE (RNAV)