

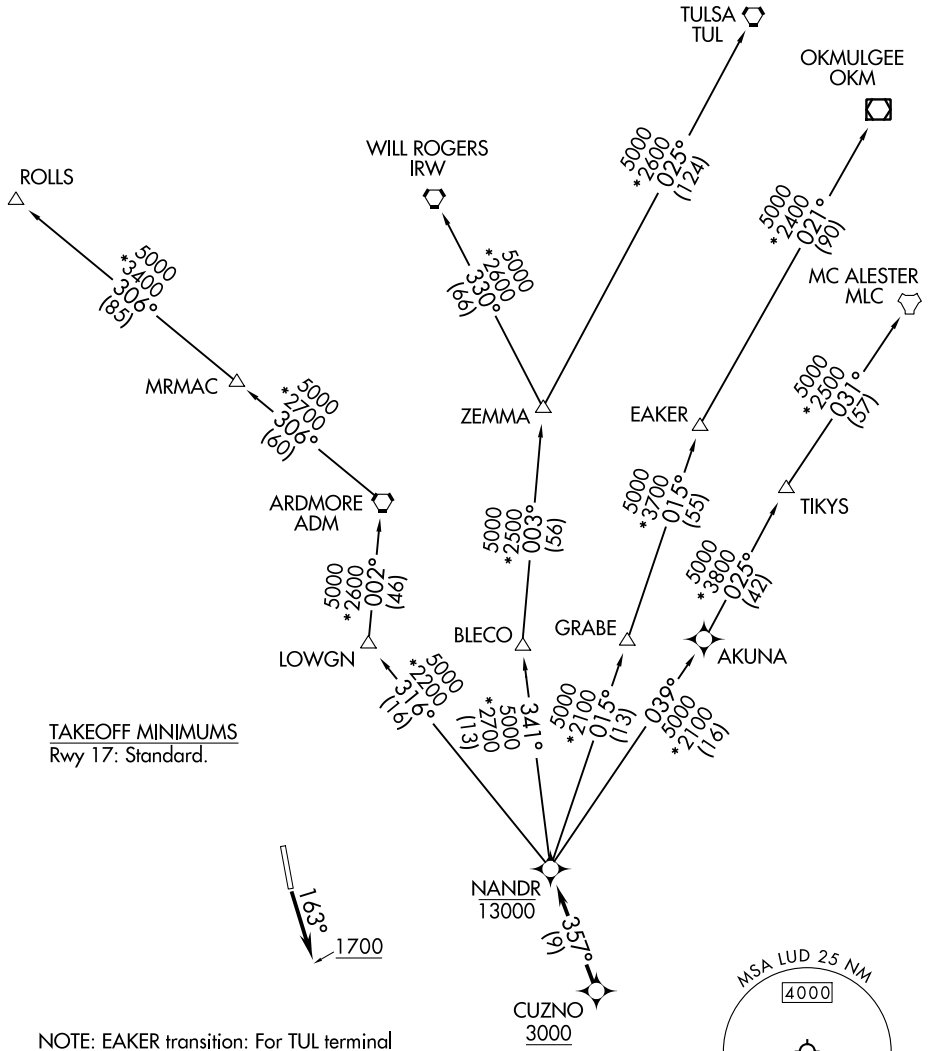
# NANDR TWO DEPARTURE (RNAV)

REGIONAL DEP CON  
118.1 306.95

RNAV 1 - DME/DME/IRU or GPS.

RADAR required.

**TOP ALTITUDE:  
ASSIGNED BY ATC**



SC-2, 16 MAY 2024 to 13 JUN 2024

SC-2, 16 MAY 2024 to 13 JUN 2024

NOTE: Chart not to scale.

(NARRATIVE ON FOLLOWING PAGE)

# NANDR TWO DEPARTURE (RNAV)