

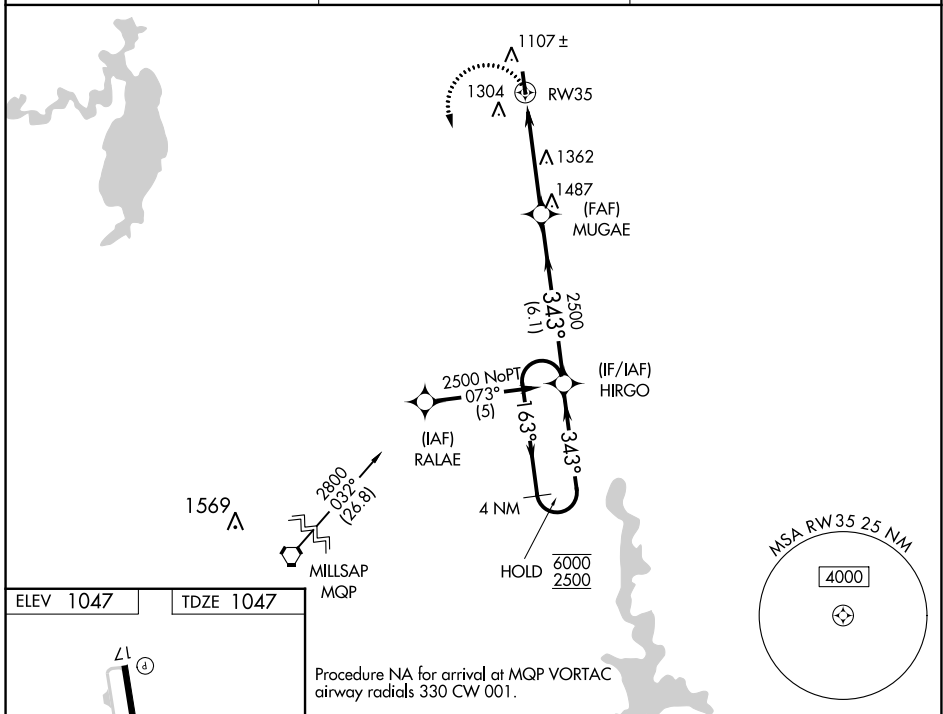
APP CRS 343°	Rwy Idg 4200
	TDZE 1047
	Apt Elev 1047

RNAV (GPS) RWY 35

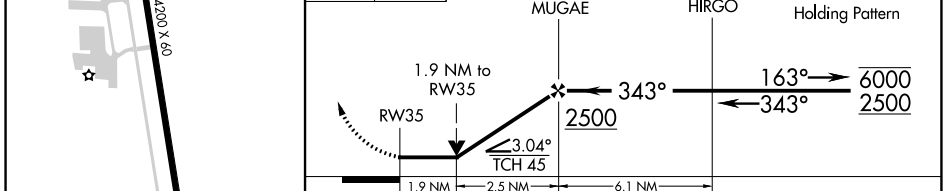
DECATUR MUNI (LUD)

RNP APCH - GPS.	<p>⚠ Rwy 35 helicopter visibility reduction below 3/4 SM NA. VDP NA when using Fort Worth Meacham Intl altimeter setting. When local altimeter setting not received, use Fort Worth Meacham Intl altimeter setting and increase all MDAs 120 feet, and LNAV visibility Cat B 1/2 SM, and Circling Cat B 1/4 SM.</p>	<p>MISSED APPROACH: Climbing left turn to 2600 direct HIRGO and hold.</p>
-----------------	--	--

AWOS-3 118.225	REGIONAL APP CON 118.1 306.95	UNICOM 122.8(CTAF)
--------------------------	---	------------------------------



ELEV 1047	TDZE 1047	Procedure NA for arrival at MQP VORTAC airway radials 330 CW 001.
2600 HIRGO		VGSI and descent angles not coincident (VGSI Angle 3.50/TCH 40).



CATEGORY	A	B	C	D
LNAV MDA	1 680-1	633 (700-1)	NA	
C CIRCLING	1 680-1	633 (700-1)	NA	

SC-2, 16 MAY 2024 to 13 JUN 2024

SC-2, 16 MAY 2024 to 13 JUN 2024