

WAAS CH 72612 W35A	APP CRS 350°	Rwy Idg 4400 TDZE 769 Apt Elev 769
--	------------------------	---

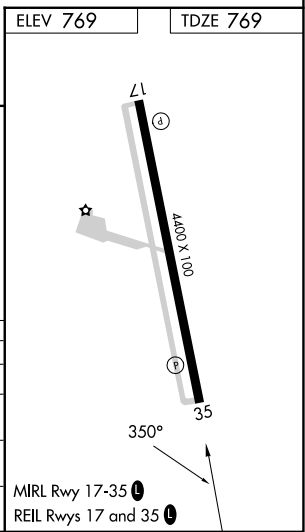
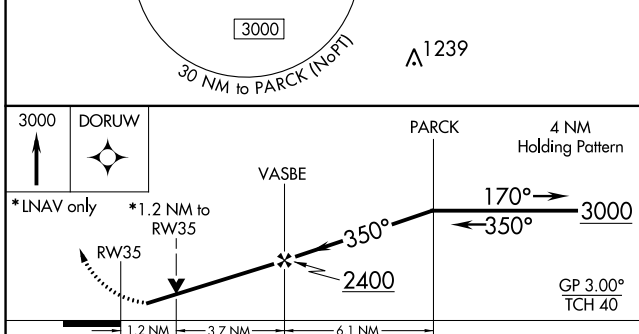
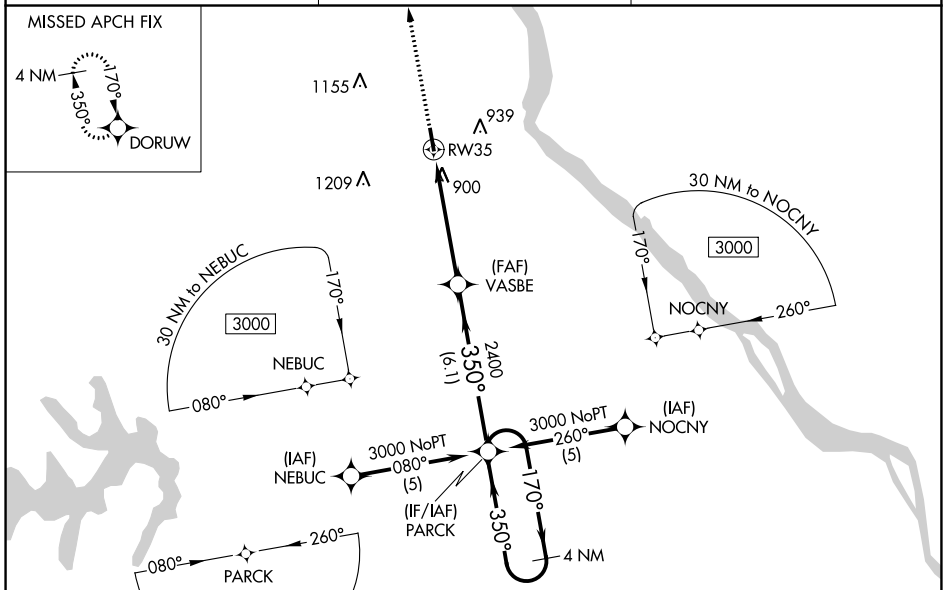
RNAV (GPS) RWY 35

HANNIBAL RGNL (H.A.E.)

▽ For uncompensated Baro-VNAV systems, LNAV/VNAV NA below -16°C (4°F) or above 54°C (130°F).
△ NA DME/DME RNP-0.3 NA. Visibility reduction by helicopters NA.
 When local altimeter setting not received, use Quincy altimeter setting; increase all DA 41 feet, all MDA 60 feet, and Circling Cat C visibility ¼ SM. Baro-VNAV and VDP NA when using Quincy, IL altimeter setting.

MISSED APPROACH: Climb to 3000 direct DORUW and hold.

AWOS-3PT 120.775	KANSAS CITY CENTER 126.225 317.775	UNICOM 122.8 (CTAF) ①
----------------------------	--	---------------------------------



CATEGORY	A	B	C	D
LPV DA	1019-1 250 (300-1)			NA
LNAV/VNAV DA	1242-1¾ 473 (500-1¾)			NA
LNAV MDA	1200-1 431 (500-1)	1200-1¼ 431 (500-1¼)		NA
CIRCLING	1260-1 491 (500-1)	1640-2½ 871 (900-2½)		NA

NC-3, 16 MAY 2024 to 13 JUN 2024

NC-3, 16 MAY 2024 to 13 JUN 2024