

WAAS CH <b>77923</b> <b>W19A</b>	APP CRS <b>194°</b>	Rwy Idg TDZE Apt Elev	<b>6002</b> <b>4482</b> <b>4514</b>
--	------------------------	-----------------------------	---

# RNAV (GPS) RWY 19

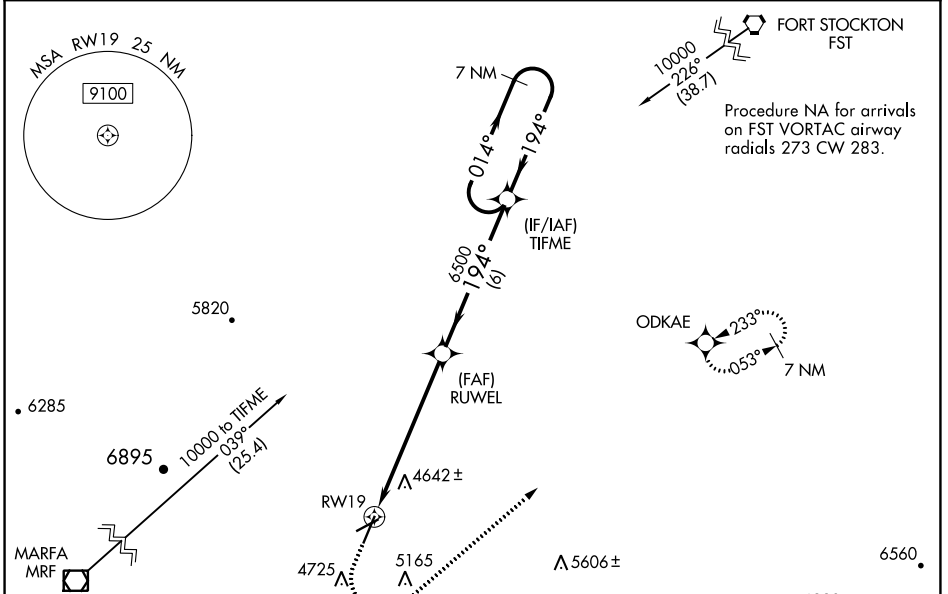
ALPINE-CASPARIS MUNI (E38)

RNP APCH - GPS.

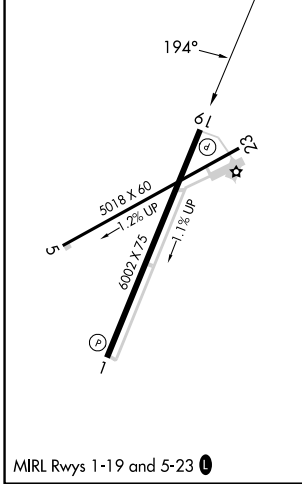
**⚠** For uncompensated Baro-VNAV systems, LNAV/VNAV NA below -23°C or above 54°C. Circling NA W of Rwy 1-19. Rwy 19 helicopter visibility reduction below ¾ SM NA.

**⚠** MISSED APPROACH: (Do not exceed 165K until ODKAE) Climb to 5200 then climbing left turn to 9000 direct ODKAE and hold, continue climb-in-hold to 9000.

AWOS-3 <b>119.025</b>	ALBUQUERQUE CENTER <b>135.875 292.15</b>	UNICOM <b>122.8 (CTAF) 0</b>
--------------------------	---	---------------------------------



ELEV 4514	TDZE 4482
-----------	-----------



MIRL Rwys 1-19 and 5-23 **0**

ALPINE, TEXAS  
Amdt 1B 21MAR24

30°23'N-103°41'W

# ALPINE-CASPARIS MUNI (E38) RNAV (GPS) RWY 19

SC-3, 16 MAY 2024 to 13 JUN 2024

SC-3, 16 MAY 2024 to 13 JUN 2024