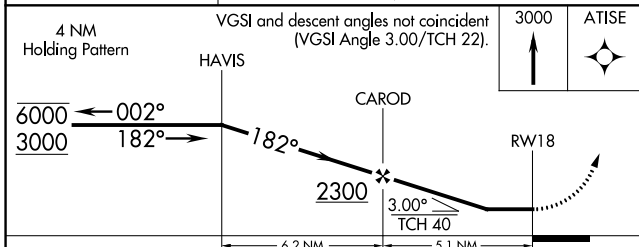
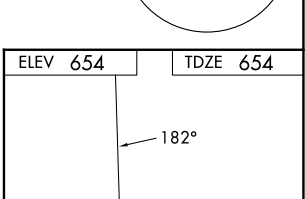
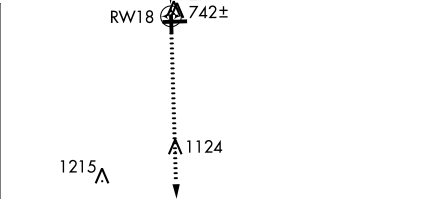
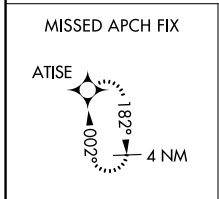
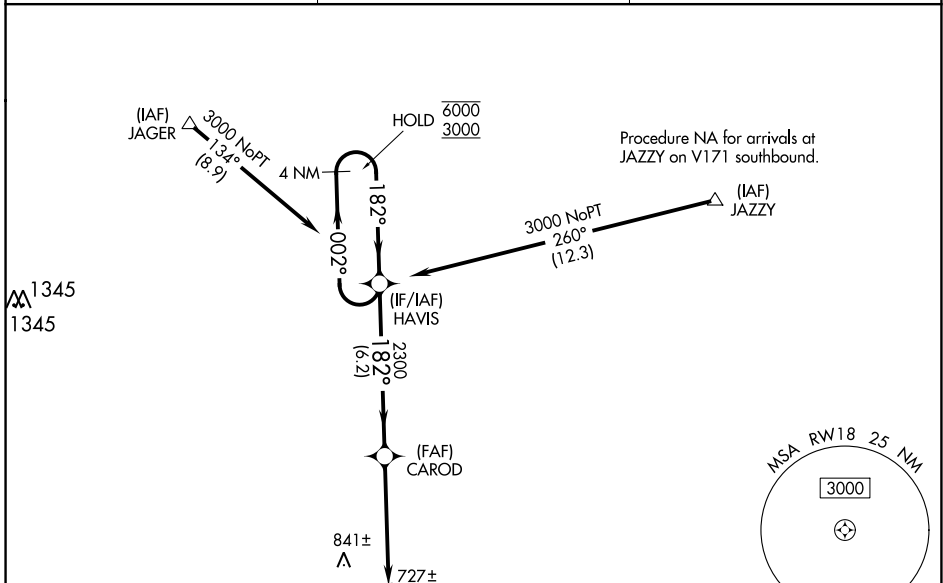


WAAS CH 82639 W18A	APP CRS 182°	Rwy Idg TDZE Apt Elev 3200 654 654
--	------------------------	--

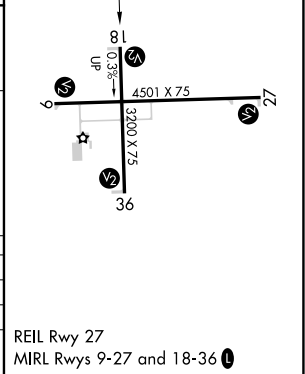
RNAV (GPS) RWY 18

EDGAR COUNTY (PRG)

RNP APCH.		MISSED APPROACH: Climb to 3000 direct ATISE and hold.
<p>▽ Rwy 18 helicopter visibility reduction below 1 SM NA. ▲ Straight-in Rwy 18 NA at night, Circling Rwy 18 NA at night.</p>		
AWOS-3 124.175	HULMAN APP CON 125.45 339.8	UNICOM 123.0 (CTAF) 1



CATEGORY	A	B	C	D
LP MDA		980-1	326 (400-1)	
LNAV MDA		1000-1	346 (400-1)	
C CIRCLING	1080-1 426 (500-1)	1120-1 466 (500-1)	1200-1½ 546 (600-1½)	1320-2 666 (700-2)



EC-3, 16 MAY 2024 to 13 JUN 2024

EC-3, 16 MAY 2024 to 13 JUN 2024