

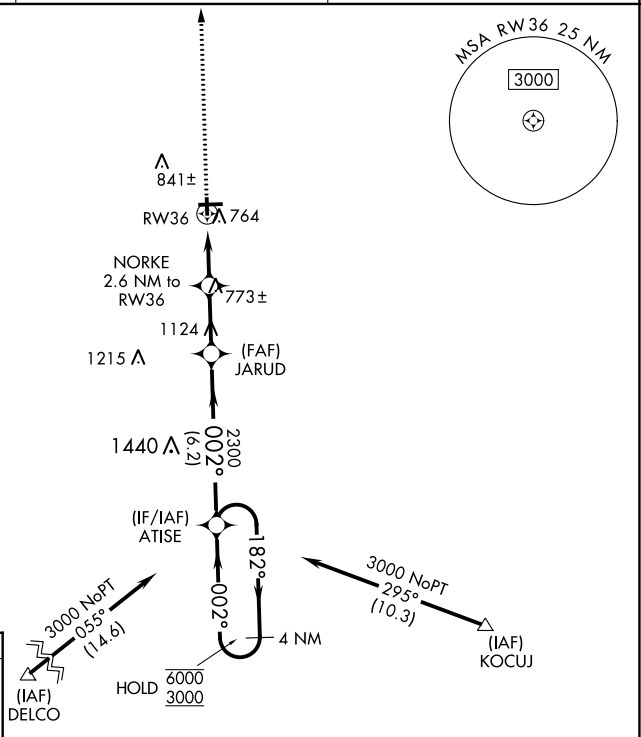
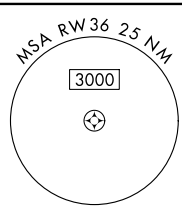
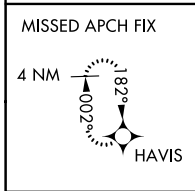
WAAS CH 78339 W36A	APP CRS 002°	Rwy Idg TDZE 654 Apt Elev 654	3200
----------------------------------------	------------------------	---------------------------------------------------	-------------

RNAV (GPS) RWY 36

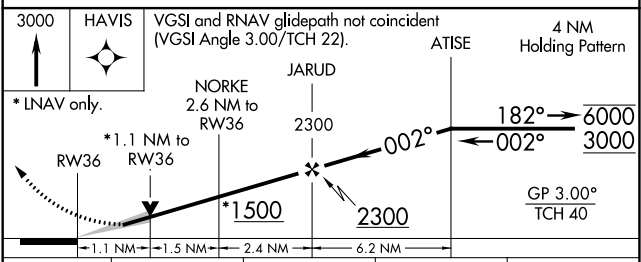
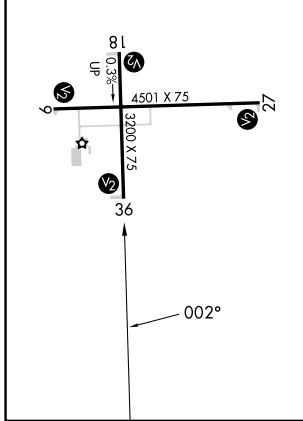
EDGAR COUNTY (PRG)

RNP APCH.	MISSED APPROACH: Climb to 3000 direct HAVIS and hold.
<p>For uncompensated Baro-VNAV systems, procedure NA below -16°C or above 54°C. Circling Rwy 18 NA at night.</p>	

AWOS-3 124.175	HULMAN APP CON 125.45 339.8	UNICOM 123.0 (CTAF)
--------------------------	---------------------------------------	-------------------------------



ELEV 654	TDZE 654
REIL Rwy 27 MIRL Rwys 9-27 and 18-36	



CATEGORY	A	B	C	D
LPV DA	904-1 250 (300-1)			
LNAV/VNAV DA	925-1 271 (300-1)			
LNAV MDA	1020-1 366 (400-1)			
CIRCLING	1080-1	1120-1	1200-1½	1320-2
	426 (500-1)	466 (500-1)	546 (600-1½)	666 (700-2)